



KNIGHTON HEATH GOLF CLUB

Minutes of the Management Committee Meeting held on Monday 17 DECEMBER 2012 at 18:00 in the Clubhouse.

| | | |
|----------------|--|---------------|
| Present | A Hebditch (Chairman), B Andrew, M Collins, Mrs D Lennon, K Way, C Langston (Club Captain), B Kennedy (President). R Bauser (Manager). | Action |
| 749 | APOLOGIES C Knight | |
| 750 | MINUTES OF PREVIOUS MEETING The minutes of the meetings held on 19 November 2012 were accepted as a true record and the Chairman was authorised sign them. | |
| 751 | MATTERS ARISING 690 Lockers: To be discussed under Finance. 716 Solar Panels : To be discussed under Finance. 744 Ladies & Pro Shop : To be discussed under Course. | |
| 752 | CHAIRMAN AH - suggest a Members Form be held on Thursday 21 February 2013 at 18:30. The Committee agreed, the first part of the meeting would be taken by presentations from each Director: Course & Pro Shop, Finance, H & S, House & Membership. The second part would be AOB i.e. members question time. | |
| 753 | CLUB CAPTAIN <i>Minutes of the meeting held on 6 Dec 2013 were tabled.</i> The Captain highlighted the relaxed dress code as approved by the Captains Committee. It was agreed that club officers would assist with the policing. | |
| 754 | FINANCE (a) <u>A financial summary</u> and detailed report was tabled as at end Nov 2012. <u>Finance Sub-Committee:</u> Colin Chard had been included on the Committee. <u>Projects:</u> Manco agreed that proposed Locker replacement scheme as well as the Solar Panel project would be put on hold at present. RB to inform suppliers. <u>A detailed Membership Analysis</u> as at 17 December 2012 was tabled indicating 13 new full members, 2 of whom purchased the special offer package. Total New Members 24 J Clarke – interviewed awaiting payment. | RB |

| | | |
|------------|--|-----------|
| | | |
| | | |
| | | |
| 755 | SUB COMMITTEES | |
| (a) | <p>GREENS BA tabled a detailed course report.</p> <p><u>A Young</u> – replied to a letter received from a group of members re mats at back of tee. Members could play off yellow in general play if necessary.</p> <p><u>Length of Course</u> – a winter course had been set for qualifying competitions due to the reduced yardage, with a SS of 69.</p> <p><u>Tee Notices</u> – where applicable “keep off the tee” notices would be placed on course.</p> <p><u>150 yard markers</u> – posts would be concreted in and although at an angle (in rough) would be 150 yds from tee.</p> <p><u>Temporary Greens</u> – not possible to do anything this year. Bigger hole cup were available. Could not be used for qualifying competitions.</p> <p><u>Members Buggies</u> – the current bye-laws indicate that members with medical conditions can get approval for buggy use even if they were banned on course. The Committee agreed that buggies would only be banned on the course if members safety was at risk. The bye-law would have to be revised.</p> | |
| | | |
| (b) | HEALTH & SAFETY | |
| | | |
| (c) | MEMBERSHIP, MARKETING & ADVERTISING | |
| | <p>MC presented a detailed marketing plan together with a proposed social flyer.</p> <p>The Committee approved the above.</p> <p>BA – said that retention of members was important especially members who work and can only play on Saturday. Past President informed BA that 4 new (still working) members told him that they would not be renewing their membership as they were having difficulty getting a game on Saturdays (the only day they could play). BA also stated that he had been approached several times by members not happy about Saturday tee closures, especially in the winter (see AOB agenda item).</p> <p>DL – club budgeted for a 10% reduction of membership each year due mainly to members moving from area, age and course becoming difficult and injury. This was in-line with most clubs in the area.</p> | MC |
| (d) | HOUSE | |
| | | |
| 756 | MANAGER | |
| | <p><i>RB</i> – leave 18/12/2012 – 2/1/2013.</p> <p>Club Dairy 2013 – ready for collection. Newsletter – middle of next week</p> | |

| | | |
|------------|--|--------------|
| | | |
| | | |
| 757 | CORRESPONDENCE | |
| | | |
| | | |
| 758 | ANY OTHER BUSINESS | |
| | <p><u>BA - Saturday Tee closures</u> Winter Tee closures on Saturdays were causing problems with members in the winter. It appears that the Tee is closed for Ladies <u>general</u> competitions on Saturday or Sunday mornings most weeks. (some junior comps were also being held on at weekends in the winter). Male members only had one competition (stableford or medal) per month and those that worked during the week had difficulty getting a game in general play using the ball shoot. BA stated that it was not unreasonable to keep Saturday morning in winter, free from this sort of Tee closures and to only allow club monthly stableford or medals on Saturdays in winter months. The diary for next year there was hardly any free space for general play and that there was a case to look at the number of comps throughout the year, along with other reasons for the tee closures.</p> <p>The matter was referred to the Captain for discussion at the next meeting.</p> | CL |
| | | |
| | There being no further business the meeting closed at 21:30. | |
| | | |
| | CHAIRMAN | DATED |

COURSE REPORT

December 2012

COURSE WORK

Greens

We are currently verti-draining the greens.
We are cutting as and when we can with the weather conditions.

Tees

Mats and winter tees are in use.

Fairways

We have finished verti draining the fairways.

Approaches

The temps in the approaches are working well.
The holes are change when needed.

Bunkers

The new bunkers have been turfed and the first layer of sand has been put in.

Long rough

We are continuing to cut these areas when we can.

Pathways and Mats

The 8th is settling and we will continue after the construction on the 4th is complete.

Irrigation

We are replacing the irrigation around the 4th tee.

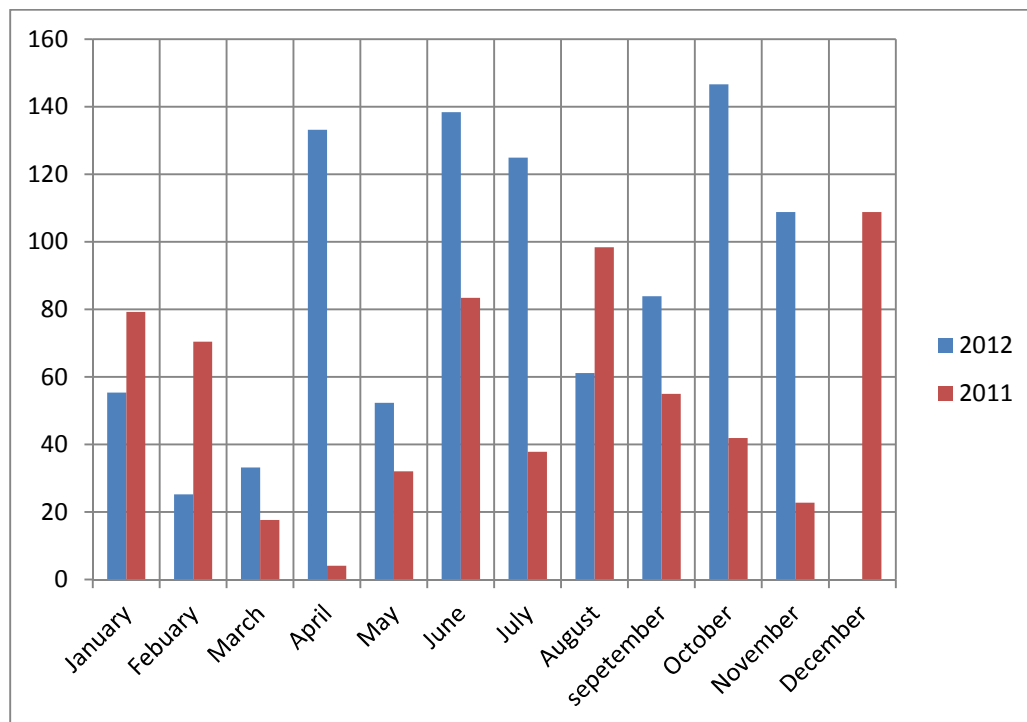
GENERAL

Environmental areas will start to appear around the course and will be marked with blue posts. Free relief is to be taken from these areas. (Local rule).
These include new heather areas. (Brashing and areas back to mineral soil).

Long term ground under repair (GUR) will also be marked with blue posts.
This is to reduce cost as to white line each week would be expensive.

RAIN

See table below for how much rain we have had so far.



As you can see we have had our share of the rain this year.

Total rain fall

2011 = 651.6mm / 26.06 inches

2012 = 962.9mm / 38.5 inches

Difference 311.3mm / 12.45 inches with December to go!

WINTER PROJECTS

Bunkers

13th, they have been turfed and the first layer of sand has been put in place.

A sump was added to help with drainage.

To reduce stones coming up we put turf upside down in both bunkers.

17th, has been turfed and the first layer of sand has been put in place.

A sump was added to help with drainage.

To stop stones coming up we layered the bottom of the bunker with sand, landscape fabric and then upside down turf.

Approach

13th has been contoured and turfed. This area will be treated as rough, to stop balls rolling onto the green.

Path

8th, this has been left to allow the area to settle. When we have finished with the construction of the 4th tee we will finish the path.

Tee

4th we are well on the way with the tee.

We have, Striped the turf.
 Striped the topsoil from the lower part of the white tee.
 Removed the front of the blue tee.
 Dug in the trench line for the irrigation.
 Dug in the drain line.

To do next.
 Pipe and stone the drain.
 Install the irrigation.
 Shape and level sub soil.
 Level top soil.