



KNIGHTON HEATH GOLF CLUB

**Minutes of the Management Committee Meeting held on Monday
18 MARCH 2013 at 18:00 in the Clubhouse.**

Present	A Hebditch (Chairman), B Andrew, M Collins, C Knight, & C Langston (Club Captain). R Bauser (Manager).	Action
783	APOLOGIES	
	B Kennedy, D Lennon & K Way	
784	MINUTES OF PREVIOUS MEETING	
	The minutes of the meetings held on 20 February 2013 were accepted as true record and the Chairman was authorised sign them.	
785	MATTERS ARISING	
755(b)	Annual Electrical Certificate – Quotes reviewed, Committee decided to award AEC Electrical contract.	
786	CHAIRMAN	
	Nothing to report.	
787	OPEN FORUM Notes of the meeting were tabled and approved by the Committee. RB to place on website and in next newsletter.	
788	CLUB CAPTAIN	
	<i>Minutes of the meeting held on 13 March 2013 were tabled.</i> <u>CL highlighted the following items:</u> 696 (b) – KHKO draw had been done and circulated, 34 teams split into East & West, 10 singles maximum of 18 handicap. 696 (d) - enquiries from M Westaway and other members as to 5 day members entering Trophy Competitions played on a weekend by paying a green fee. The Captain's Committee unanimously agreed that 5 day members could not play in any competitions which were scheduled to be played on a weekend. This included the Club Championships. Five Day members may however be invited to play in the Captains Day, Presidents Day, Pro's Day or Captains Charity Day.	
789	FINANCE	
	<u>A financial summary</u> and detailed report was tabled as at end Feb 2013. <u>The following comment was noted:</u> The cash flow shows that we should be able to get through the remainder of this Financial Year without the use of a Bank Overdraft. Overall a much better month It is very promising to see that Bar and catering results are much higher than budgeted and also better than last year's results in February. Expenditure remains under control.	

790	SUB COMMITTEES													
(a)	<p>GREENS BA tabled a detailed course report for March 2013 and asked for comments:</p> <p><u>The following items were raised which would be discussed with CM:</u> AH – Review the drainage on the course particularly the 1st, 3rd, 4th and 12th. MC – path to the practise area. MC – repairing of divots & pitch marks, members and/or green-keepers. MC – allocation of volunteers to maintain each hole, repairing of divots etc.</p> <p>GREENS (cont) CL – mowing around the temporary holes. BA said that it had been too wet to place the holes on the approaches and that it was not practical to mow around the current temps. As the course dried the holes would move back to the approaches.</p> <p>AH – place signage at bottom of practise ground indicating private property.</p>													
(b)	<p>HEALTH & SAFETY AH – Fire Door, CL would assist AH to fir new attachment.</p>													
(c)	<p>HOUSE CK – would repair kitchen floor.</p>													
(d)	<p>MARKETING & MEMBERSHIP MC advised as follows:</p> <ul style="list-style-type: none"> - 7 new social members and 12 new full had joined through the scheme. - Proposal from KW to allow as a benefit all Full members an additional fee social membership for their wives, partners etc. Must be residing at same address as the full member. Committee agreed. RB to advise members. - Possibly distribute social membership leaflets to Bournemouth Water. CL said he would implement. <p><u>Membership Reconciliation</u> as at 18 March 2013 was tabled. 22 new full members. 12 new junior members 6 new members had been interviewed, awaiting payment.</p>													
791	MANAGER													
	<p>The following <u>Bar & Kitchen hours</u> (from 29 March 2013) were tabled and approved.</p> <table> <tr> <td>Bar :</td> <td>Monday - Friday</td> <td>10:00 – 22:00</td> </tr> <tr> <td></td> <td>Saturday – Sunday</td> <td>10:00 – 21:00</td> </tr> <tr> <td>Kitchen</td> <td>Monday – Saturday</td> <td>10:00 – 19:00</td> </tr> <tr> <td></td> <td>Sunday</td> <td>10:00 – 18:00</td> </tr> </table> <p><u>Biomass Boiler</u>: A detailed analysis of the Biomass Boiler costs, were tabled. The Committee agreed that the plan looked very positive but would like to visit a site where one was in operation before any decision was made.</p>	Bar :	Monday - Friday	10:00 – 22:00		Saturday – Sunday	10:00 – 21:00	Kitchen	Monday – Saturday	10:00 – 19:00		Sunday	10:00 – 18:00	
Bar :	Monday - Friday	10:00 – 22:00												
	Saturday – Sunday	10:00 – 21:00												
Kitchen	Monday – Saturday	10:00 – 19:00												
	Sunday	10:00 – 18:00												

792	CORRESPONDENCE	
	None	
793	ANY OTHER BUSINESS	
	<p>AH - Boundary Fence along 9th , currently has holes which is a H & S risks of public being hit by golf balls. Council's responsibility to maintain & repair. RB to contact local Council.</p> <p>MC – P Langsmead asked if the 16 reciprocal clubs could be contact for weekend playing times when club was busy. It was agreed that this would be administered on an ad-hoc basis by the Pro Shop.</p> <p>MC – some members had offered to purchase a partition for the 19th bar. After a lengthy discussion it was agreed that the members should submit a proposal outlining the design and cost of the partition. The Committee were supportive of the idea and preferred a retractable durable system.</p>	<p>RB</p> <p>MC</p>
	There being no further business the meeting closed at 20:40.	
	CHAIRMAN	DATED

COURSE MANAGER REPORT March 2013

COURSE WORK

Course work week has been and gone and it went well, please see below for what was done to the greens.

The next course work week is the 23rd September 2013.

I want to book the following dates for the next two years.

2014, March 3rd to the 7th and September 22nd to the 26th.

2015, March 9th to the 13th and September 21st to the 25th.

Competitions need to be booked around these dates as this work is vital in providing a good quality playing surface.

Greens

We hollow cored to a depth of 2 inches and then scarified to remove organic matter from the greens. I did not put the greens back into play after this stage as I wanted the holes to stay open for the top dressing.

We applied 20 tonne of top dressing to firm up the surface; this is why they looked yellow for a while. After the dressing had been brushed in the greens went back on. We will be doing this operation again in September to keep on top of the hatch.

Fairways

The 6th was treated with an insecticide. This is why you will have seen leather jackets on the surface.

Approaches

These were also treated with the same insecticide as the 6th fairway.

Bunkers

We will edge the bunkers soon and at this point we will check how much sand is in each bunker and where so that there is an even covering over the bunker.

Only after we have done this will we order sand in.

We have to change the sand type as the quarry has stopped producing the type we were using. I am getting samples in to see which one we go for.

Pathways and Mats

The 8th has been raked out so that members can use it.

Irrigation

We have fired up the system and are repairing leaks and broken sprinklers.

GENERAL

Environmental areas will start to appear around the course and will be marked with blue posts. Free relief is to be taken from these areas. (Local rule).

These include new heather areas. (Brushing and areas back to mineral soil).

Long term ground under repair (GUR) will also be marked with blue posts.

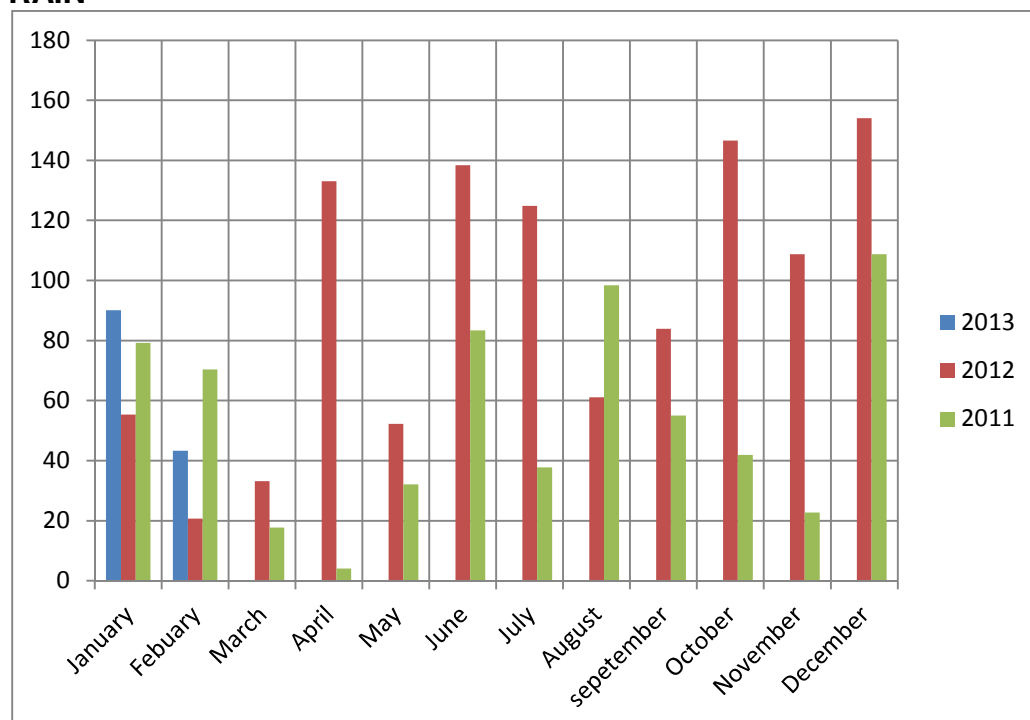
This is to reduce cost, as to white line around these areas each week would be expensive.

WORK TO COME

We will be pushing on with the 4th tee to get complete as soon as possible.

Edging the bunkers is the next main program.

RAIN



See table below for how much rain we have had so far.

Total rain fall

2011 = 651.6mm

2012 = 1112.5mm

2013 = 133.4 mm

PROJECTS

Bunkers

All the new bunkers will be in play from the 27th March 2013

Approach

This will be in play from 27th March 2013

Path

8th, we have re-leveled this so that it can be left until we are able to complete.

Tee

4th Blue/Medal tee

As you will have seen this has been leveled and turfed.

White/General play tee

We have imported rootzone and are in the process of compacting and leveling.

Once this has been complete we will turf the tee.

At the moment we are about 10 weeks behind on the 4th tee because of the weather conditions.

Because of the delay the tee will not open as intended on the 1st of April.

We will have to manage the use of both tees as the turf has not had the time to establish.

For competitions the blue tee will be open but not for practice.

The white tee will be open as soon as possible but it will need to be rested some times to protect it. This means that the matt will need to be in use through the year.