



KNIGHTON HEATH GOLF CLUB

**Minutes of the Management Committee Meeting held on Wednesday
20 FEBRUARY 2013 at 18:00 in the Clubhouse.**

Present	A Hebditch (Chairman), D Lennon (Vice) B Andrew, M Collins, C Knight, K Way & C Langston (Club Captain). R Bauser (Manager).	Action
772	APOLOGIES	
	B Kennedy	
773	MINUTES OF PREVIOUS MEETING	
	The minutes of the meetings held on 21 & 28 January 2013 were accepted as true records and the Chairman was authorised sign them.	
774	MATTERS ARISING	
755(a)	Risk Analysis "Lone Worker" – RB advised that this was no longer required.	RB
755(b)	Annual Electrical Certificate – RB advised that one quote had been received from AEC Electrical. Awaiting 2 other quotes	
758	Saturday Tee Closure (winter) – CL said that the Captains Committee (CC) had agreed, where possible, to include any "special" trophy competitions with the monthly medals as from 2014. The formats of the competitions would however have to be changed accordingly. BA said his main concern was the number of ladies competitions played on a Saturday during the winter. After a lengthy discussion it was agreed that the CC would review the diary for 2014 and where possible avoid Saturday morning fixtures in the winter.	
775	CHAIRMAN	
	Nothing to report.	
776	OPEN FORUM RB tabled a list of possible questions already raised by members. Most had already be answered individually by BA. The 3 Directors (Finance, Greens & House) had all prepared reports to present to the members. BK would chair the meeting.	
777	CLUB CAPTAIN	
	<i>Minutes of the meeting held on 7 February 2013 were tabled.</i> <u>Yeovil Invitation</u> – Manco agreed that as the team would be selected by the club, the club would pay the entry fee. An application would have to be made each year for funding. Players to wear club colours. <u>Leo Millar Charity Day Friday 6 Sept 2013</u> – to raise funds for a second prosthetic hand. Manco agreed that any green fees would be donated by the club to the Charity.	

778	FINANCE	
	A financial <u>summary</u> and detailed report was tabled as at end Jan 2013.	
779	SUB COMMITTEES	
(a)	<p>GREENS</p> <p>BA tabled a detailed course report for February 2013 and asked for comments: <u>Forestry Plan</u> would be updated at regular intervals. <u>5 Year Improvement Plan</u> – 1st draft had been completed. BA / CM and DM would plan a “course walk” and also prioritise the improvements.</p> <p>DL – what constitutes a heathland course. BA said it would consist largely of heath and trees specific to the area. AH – any directional changes to the course would have to be approved by Manco. 3rd fairway was at present not draining well. <u>Trees at back of 18th hole</u> – It was agreed that these trees should be left to act as a screen until the new trees have had time to develop. <u>D Gritt</u> – advised that he had spoken to a councillor who agreed that a representative from the council would contact the club with regards to the pubic pathways on the course. <u>Excess course wood</u> – members encouraged to make a donation to the Captains Charity.</p> <p>It was noted that BA would be on leave for 3 weeks. GT had agreed to assist the CM if necessary.</p>	
(b)	<p>HEALTH & SAFETY</p> <p>AH – sign at pond. KW said that it was not necessary.</p> <p><u>J Shepherd</u> – location of winter mat as a golfer wearing dark clothing was not visible. KW said that this was not a risk to the club and the mat did not have to be moved.</p>	
(c)	<p>HOUSE</p> <p>Nothing to report</p>	
(d)	<p>MARKETING & MEMBERSHIP</p> <p>MC – social leaflets had been distributed, 7 new social members had joined through the scheme.</p> <p><u>Membership Reconciliation</u> as at 20 February 2013 was tabled. 16 new full members. 12 new junior members 5 new members had been interviewed, awaiting payment. 4 applicants awaiting interview.</p>	
780	MANAGER	

781	CORRESPONDENCE	
	<p><u>Tim Bunce</u> – letter re battery charging facilities in the trolley shed. Problems previously experienced with providing this facility included:</p> <ul style="list-style-type: none"> • the use of extension leads trailing across the shed. • batteries were being unplugged and not charged this resulted in the club/manager being expected to provide a charged battery • batteries being swapped old for new • some of the chargers/ leads were not safe • trolleys and batteries being stolen or used by other people • the shed not being locked • took a lot of time to manage • people using the shed and not paying for the privilege • some batteries were left for several weeks on charge without being used - this could be a fire risk <p>RB to investigate options.</p>	
782	ANY OTHER BUSINESS	
	DL – suggested a welcome to new members in the newsletter. RB to action.	RB
	There being no further business the meeting closed at 20:30.	
	CHAIRMAN	DATED

COMMITTEE REPORTS - FEBRUARY 2013

COURSE

Due to the continued wet weather we have experienced from April 2012 to now, the course is at field capacity and it does not take much to saturate the course to the point that it is unplayable.

This is why the course closes at the moment because it is not possible to find relief from casual water.

I thank you for your continued understanding over this matter.

Greens

We are cutting as and when we can due to the continued weather conditions.

We have treated the greens with a fungicide because of the disease that is present.

We will verti drain the greens soon.

Tees

We are cutting as needed.

Fairways

We have to cut at the moment due to the growth.

New 150 posts have been fitted. These are measured to the centre of the greens.

Approaches

We are cutting when we can due to the growth.

The holes are change when needed.

Bunkers

We do not rake the bunkers when rain is forecast on that day as this would be a waste of labour.

Long rough

We are continuing to cut these areas when we can.

Pathways and Mats

The 8th is settling and the members can use this instead of the tarmac path if they wish.

Irrigation

We will replace broken sprinklers and repair leaks in the spring.

Machines

We are servicing all the machines ourselves to keep costs down.

Some servicing cannot be done in house so this will be out sourced

GENERAL

Environmental areas will start to appear around the course and will be marked with blue posts. Free relief is to be taken from these areas. (Local rule).

These include new heather areas. (Brushing and areas back to mineral soil).

Long term ground under repair (GUR) will also be marked with blue posts.

This is to reduce cost as to white line each week would be expensive.

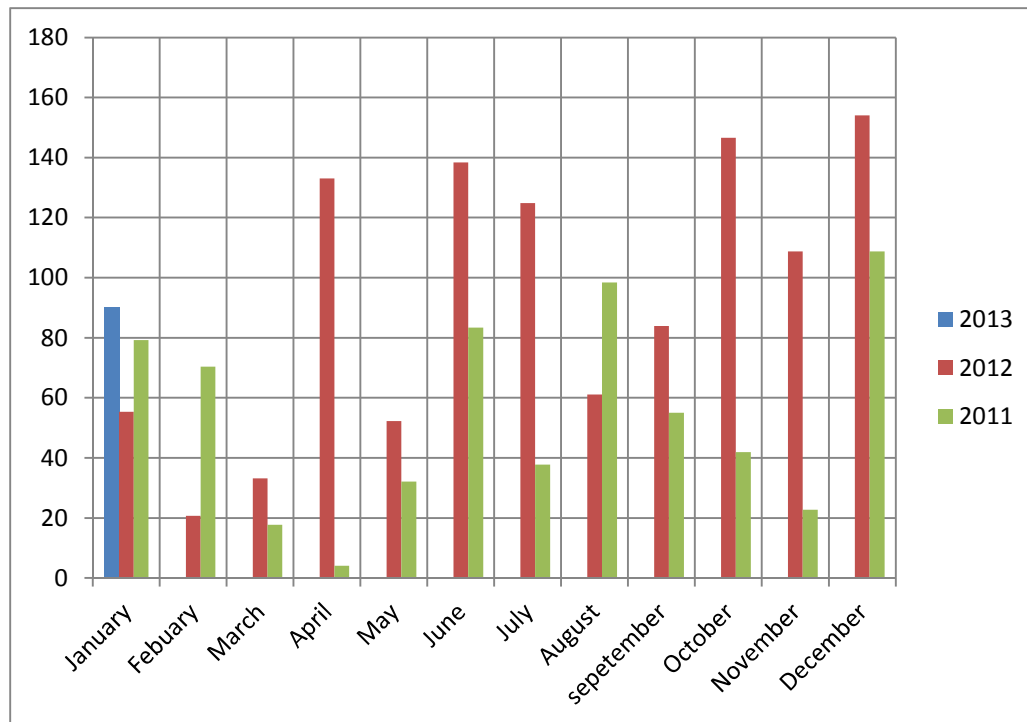
WORK TO COME

When it dries out we will continue with the 4th white tee.

While the weather stays bad we will carry on with the tree work. Please see the 5 year tree plan

RAIN

See table below for how much rain we have had so far.



Total rain fall

2011 = 651.6mm

2012 = 1112.5mm

PROJECTS

Bunkers

13th Bunkers

Complete

17th Bunker

Complete

Approach

13th Complete

Path

8th, this has been left to allow the area to settle.

Tee

4th Blue/Medal tee

As you will have seen this has been leveled and turfed.

White/General play tee

We have started to level this but we are taking out some small areas of soil that are still very wet and we will replace these with better soil. This will allow us to carry on and get the tee finished.

At the moment we are about 7 weeks behind on the 4th tee because of the weather conditions, we will work on the tee when we can but we need some good weather to help out.