



## KNIGHTON HEATH GOLF CLUB

**Minutes of the Management Committee Meeting held on Monday  
23 SEPTEMBER 2013 at 18:00 in the Clubhouse.**

<b>Present</b>	A Hebditch (Chair), D Lennon (Vice Chair & Finance) B Andrew, R Bauser (Manager).	<b>Action</b>
	<u>Other Codes used in minutes</u> - Alan Magee (CM), David Miles (DM), B Channon (BC) & Linda Willetts (LW).	
<b>849</b>	<b>APOLOGIES</b>	
	B Kennedy, C Langston, & K Way.	
<b>850</b>	<b>MINUTES OF PREVIOUS MEETING</b>	
	The minutes of the meetings held on 27 August and 16 September 2013 were accepted as true record and the Chairman was authorised sign them.	
<b>851</b>	<b>MATTERS ARISING</b>	
840	<p><u>Biomass Boiler</u> – RB tabled the cash-flow projections received from Eco Renewable Energy for the installation of a manual feed wood pellet boiler.</p> <p>AH &amp; RB visited Ashley Wood who had recently installed a similar boiler and were advised by the Manager that they were very satisfied. After a lengthy discussion the Committee voted by a show of hand with the majority voting in favour of purchasing the manual feed boiler. BA voted against. The Manager was instructed to proceed.</p> <p><u>Local Rule</u> – It was agreed that a local rule was not necessary for the new tree under a diver height as all such trees had been tagged.</p>	<b>RB</b>
<b>852</b>	<b>CHAIRMAN</b>	
	<p><u>Main Gate</u> – the main gate had been fitted with a manual FB lock and would in future be locked at night by the bar staff.</p> <p><u>Water Storage Tank</u> – BA advised that the CM would be replacing the entire fence and door surrounding the tank.</p>	
<b>853</b>	<b>CLUB CAPTAIN</b>	
	<p><i>Minutes of the meeting held on 9 September 2013 were tabled.</i></p> <p><u>Men's Invitation</u> – BA said he was disappointed that the registration was done in the Pro Shop. A casual Jack Baker was on duty, the cards were incorrectly marked, he did not know what tees were to be played off and the raffle prizes were poor.</p> <p>DL – balls as prizes for the 2's received complaints and the HC allowance should have been <math>\frac{3}{4}</math> and not full.</p>	

<b>854</b>	<b>FINANCE</b>	
	<p><b>Management Accounts</b> The Management accounts as at 31 August 2013 were tabled for discussion.</p> <p>RB would discuss with the CM the re-phasing of the budget.</p> <p>Sky TV – RB to investigate the cost of Virgin Commercial, Sky was £336 per month.</p>	
<b>855</b>	<b>SUB COMMITTEES</b>	
(a)	<p><b>GREENS</b> The Course Managers report for September was tabled for discussion.</p> <p><u>Boundary Netting</u> – awaiting an arboricultural report. The report must accompany the plan drawings, before being submitted to the Council planners for approval. Documents should be submitted by the end of the week (27/9/2013). BA said that signs would be placed at 9<sup>th</sup>,13<sup>th</sup>,15<sup>th</sup> ,16<sup>th</sup> tees requesting that players report any balls going into the houses to the office.</p> <p><u>Tree Survey</u> – completed. Club had applied for a TPO on the tree along the 13<sup>th</sup> boundary only.</p> <p><u>Irrigation appraisal</u> – Irritech Ltd had submitted a detailed evaluation of the irrigation system, the conclusions of which have been tabled for discussion. Summary of the conclusions:</p> <ul style="list-style-type: none"> <li>i) Components are showing signs of weakness &amp; fatigue.</li> <li>ii) The control system and mainline need an upgrade.</li> <li>iii) System is dated hence the low water pressure and poor uniformity resulting in a wastage of water.</li> <li>iv) Sprinkler configuration is poor, creating poor coverage.</li> <li>v) H &amp; S issues, warning signage, very corroded points &amp; valves.</li> <li>vi) Investigate future water storage options.</li> <li>vii) The system is in need of an upgrade, which would entail the replacement of the underground mainline &amp; control system and green/tee system.</li> <li>viii) Borehole. DL would ask the previous manager if he knew where the borehole report was.</li> </ul> <p>It was also concluded that an overall blue print be commissioned which would reflect a scheduled upgrade.</p> <p>DL – could the path on 13<sup>th</sup> green be moved to the opposite side? BA said that possibly the 13<sup>th</sup> would be extended and this would then not be feasible.</p> <p><u>Badgers</u> – the fairways had been sprayed with a special repellent but it had not worked.</p> <p>MC – members were going to raise at the AGM as to why there was no divot mix in the tee boxes. BA would discuss with CM</p>	<p><b>DL</b></p> <p><b>BA</b></p>

	<b>(b) HEALTH &amp; SAFETY</b> None	
	<b>(c) HOUSE</b> Awaiting a quote for the kitchen flooring.	
	<b>(d) MARKETING &amp; MEMBERSHIP</b>  <u>Membership Analysis</u> as at 23 September 2013 was tabled.  Notes: - New Members 13-Full, 1- Full 25, 1-Colt, 1-Junior and 4-Social. - New full members to be interviewed: 0 - Full members awaiting payment: 2  MC – would table a proposed category revision at the next meeting, some thoughts were: - reduce the age categories between 23 and 28 - introduce a long service reward category not linked to age.	<b>MC</b>
<b>856</b>	<b>MANAGER</b>	
	<u>Staff:</u> P Walters (admin assistant) leave 30/9 – 16/10/ 2013.  <u>Golf Booking</u> – Sunday 29 Dec 2013: W Richards had reserved a tee time from 10:00 – 12:30 for members & guests with the bar hours extended to 21:00. Committee approved.	
<b>857</b>	<b>CORRESPONDENCE</b>	
	None	
<b>858</b>	<b>ANY OTHER BUSINESS</b>	
	BA – would ask that KW draft a risk assessment on the pump house.  <b>DATE OF NEXT MEETING: TUESDAY 22 OCTOBER 2013</b>	
	There being no further business the meeting closed at 20:10.	
	<b>CHAIRMAN</b>	<b>DATED</b>

## **COURSE MANAGER REPORT**

### **September 2013**

#### **COURSE WORK**

##### **Greens**

Course maintenance week is soon and an information sheet has been put on the course information board. Some members are asking why they will be on temps when this work is being carried out. This because if we were to do each green completely one at a time the amount of time to complete the work will almost double, so instead of up to one week it would take up to two weeks.

Work that will be carried out (weather dependent)

Hollow coring, scarifying, fertilizing, over seeding, topdressing.

##### **Approaches**

These have dried out as there is not adequate coverage from the irrigation system.

##### **Tees**

We are having a lot of damage on the tees from badgers at the moment. We have treated their food source to try and stop the damage, this has not worked as well as expected. We are repairing the damage daily.

In October we will be over seeding all the tees.

##### **Fairways**

At the start of October we will over seed a couple of the bearer fairways.

##### **Bunkers**

These have been edged.

##### **Rough**

We are cutting the lush areas more often and at the moment doing a full cut every two weeks to keep the stalks down.

##### **Boundaries**

The trees on the 13<sup>th</sup> and 15<sup>th</sup> holes have been taken down. The trees along the boundary on the 15<sup>th</sup> have been checked for dead and dangerous branches and these have been removed also.

The planning has gone in for the safety fence along the 9<sup>th</sup> and 13<sup>th</sup> holes.

We have however had to have a report on the trees along these areas for planning.

Because of all these extra restrictions that seem to be put on this job I think it would be advisable to get the company in who gave the original quote and get them to re-quote, as the price may increase.

##### **Irrigation**

The irrigation survey has taken place and I have just received the report. More to follow in next month's report.

#### **BUDGETS**

No course improvements will take place this year because of the boundary issues.

#### **VANDALISM**

CCTV signs have been put up on the boundary fences to try and keep the little darlings out of the golf course.

The only other damage has been from animals. (See tee section)

## 5 YEAR IMPROVEMENT PLAN

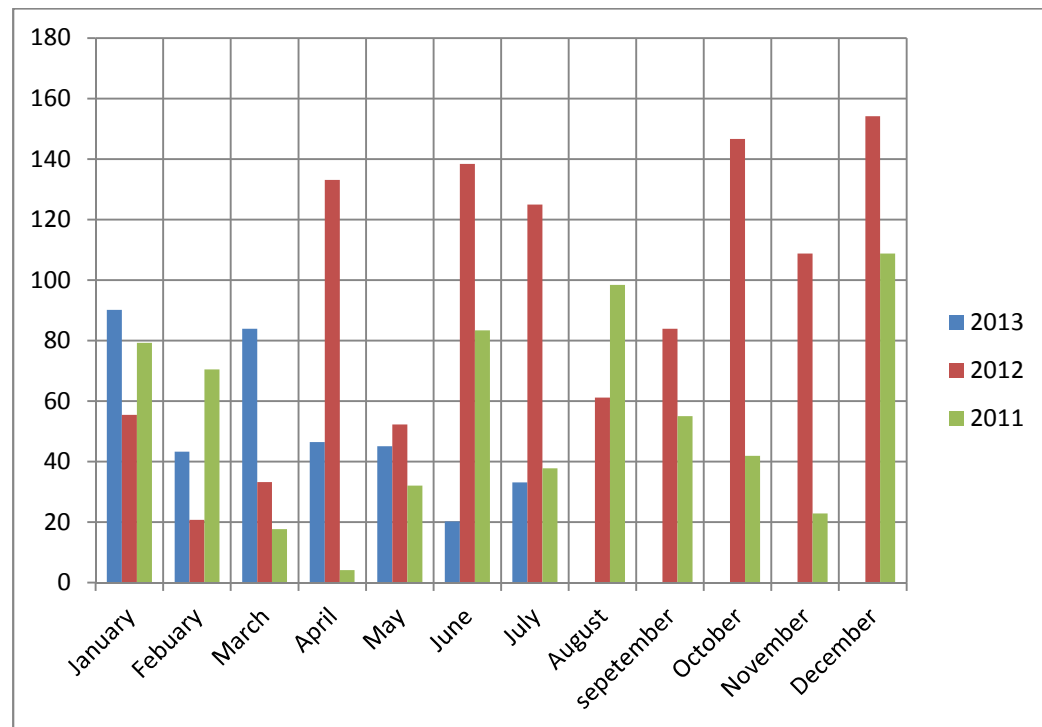
The quote for the design and construction has been sent in and because of the boundary issues these have been put on hold.

The improvements that are carried out in house have also been put on hold for this winter because of the boundary.

This means we will be carrying out more woodland work this year.

## RAIN

See table below for how much rain we have had so far.



Total rain fall

2011 = 651.6mm

2012 = 1112.5mm

2013 = 362.1mm

## OTHER ITEMS

The front gate has had the bolt put on it so it can be locked. The padlock that we have to use is called a FB lock, this means that all the emergencies service have a key for it already.