

COURSE MANAGER REPORT

January 2014

COURSE WORK

Due to the wet weather we have to stay off the course with machinery, as this will do more damage than good. We are only driving on the course when we have to. Photographs of the golf course have been put up on the information board, in the pro shop and on the web site so members can see why we are closed.

Greens

When the weather breaks we will carry out the following.

- Verti draining.
- Feeding
- Moss control
- Pest control
- Soil surfactant
- Patching out damaged areas.

Approaches

This spring we will carry out the following if possible

- 2 x verti cutting
- Top dressing
- Selective herbicide

Tees

Work to carry out

- Verti draining
- Soil surfactant
- Moss control
- Selective herbicide

Fairways

I have not seen the fairways as bad with flooding due to the 9.5 inches of rain that we have had over the last 22 days (7th January).

Rough

Cut if and when needed.

Boundaries

The planning has been turned down by the council for the netting at the 9th and 13th. They have also put TPO's on all of the trees in these areas.

Temporary greens

These are always cut twice a week normally Monday and Friday. We have put a white line around them because some members playing in friendly games didn't have common sense to take a drop.

ITEMS TO PURCHASE

Air compressor £800 + VAT

Ours leaks but we will continue using it until it becomes a problem.

This price could have gone up as they were quoted a while ago.

This cost is for the compressor, fittings and air tools required.

Vandalism

No problems over the Christmas period due to the rain.

Irrigation

The system has been drained down.

We need to start to thinking about replacing the system sooner than later.

Trees

On Friday 3rd January at 7:30pm I had a call from the police about a tree on our boundary being dangerous. I came up to the club and went and looked at the tree from the house side. I told the police that we needed to look at it from the course side. When we got back to the club the police weren't interested in getting out of their van to look at the tree. I went over with Mrs D Knight to look at the tree. At that time it didn't look as it was moving and this is what we told the police.

At 11pm I had a phone call from the Bournemouth council about the tree. They asked if a professional tree surgeon had looked at it yet. I told them no but we were getting uptons in soon for other work and they could look at it then. I was told that due to the danger of the tree (if it went over it would hit a house) it needed looking at right away and they had tree surgeon in the area the next morning.

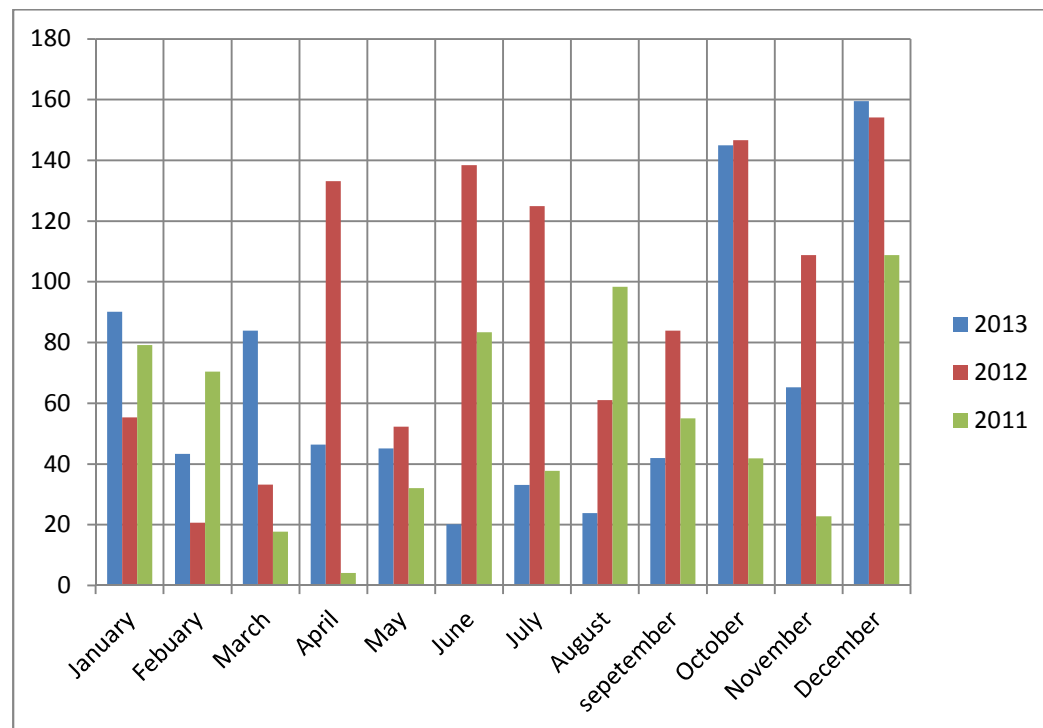
I meet the tree surgeons at 8.30 on the Saturday to look at the tree. In the light we could see that the tree was moving and it did need to come down. If it had come down then it would have taken more trees with it causing more damage and more cost.

With the high winds we have had other trees blown over and a lot of branches have broken off. A tree by the 2nd green has split and the rest will need to be taken down for safety as it is by the bridleway. There are also a few branches hanging high up in trees that need to be cut down and we have to pay for this also. I am getting a price for this from our normal tree surgeons.

With all the high winds we have been unable to cut up the wind blows for safety reasons. As soon as the wind eases we will cut them up ready for removal when the ground conditions allow.

RAIN

See table below for how much rain we have had so far.



Total rain fall

2011 = 651.6mm

2012 = 1112.5mm

2013 = 797.7

For the first 15 days in December we had 1.5mm of rain.

For the last 16 days we had 158mm of rain.

OTHER ITEMS

Outfield slitter, please see the attached sheet. With this slitter we would be able to aerate the fairways and rough areas faster and more often over the winter periods. The payment for this machine would come out of the course budget spread over 2 years.