

Course Managers Report

April 2015

COURSE WORK

Using twitter during the course maintenance week allowed the members to see what work is carried out. I would like to point out that this is the normal amount of work carried out during these periods.

Greens

Work carried out during maintenance week

- Scarifying to a depth of 10mm
- Solid tinning with 17mm tines to a depth of 200mm
- Top dressing with 40 tonnes of sand
- Fertilising with a granular feed

This took 4 full days to complete.

Approaches

During maintenance week we were able to carry out the following tasks due to the dry weather.

- Scarifying to a depth of 10mm
- Verti draining with 17mm tines to a depth of 150mm
- Top dressing with 20 tonnes of sand.

Tees

Our tees are small, uneven and take a lot of play during the season. This is why they need to be rested over winter and into spring. Winter tees are used from the 1ST NOVEMBER TO THE 31ST MARCH.

Fairways

We have a thatch problem on the fairways, more information to come next month.

Bunkers

All the bunkers have been edged.

29 tons of sand has been added to some of the bunkers.

The 17th fairway bunker had the sand removed and used in the 12th and 13th bunkers. The new sand was then imported into the 17th. Other bunkers topped up were. Front left on the 1st, front left and right of 10th, front and left of 14th, 15th front greenside and front right of 17th.

Long Rough

We have been cutting some areas when the conditions are right.

Ditches

10th ditch has been weeded and sprayed

White lines

The lines will be a loud to fade out for the summer. They will return next autumn

Temporary greens

These will be removed for the summer and return at the end of September.

Trees

Tree work has all but stopped. We are only removing damage for weather conditions.

Information

Only when there is an issue will a date be added to the phone line. Twitter will be done daily.

Volunteer day

31st of March is the last of the weekly helper days. We will be carrying on monthly until we get into next winter. This has been explained to the volunteers.

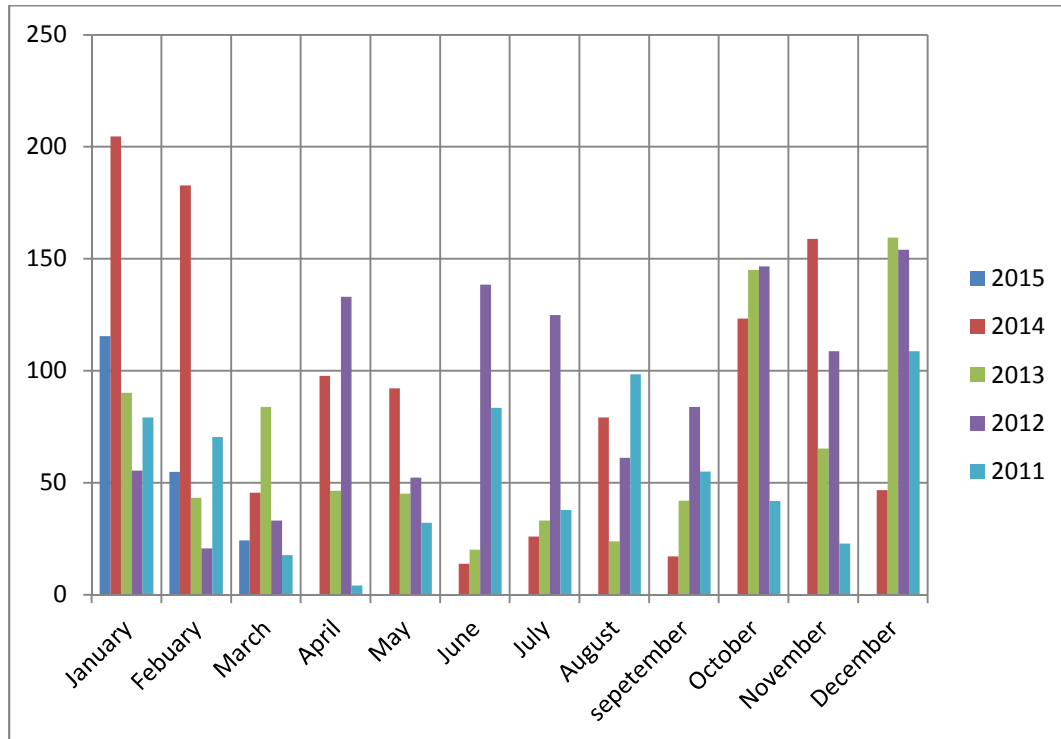
Course status

The table below shows the number of day the course has been open or closed and the number of days that trolleys and buggies were allowed for each month.

Month	Days closed	Days open	Trolleys allowed	Buggies allowed
January	0	31	25	23
February	1 (snow)	27	27	26
March	0	31	30	30

RAIN

See table below for how much rain we have had so far.



Total rain fall

2015 = 194.7mm

2014 = 1088.1mm

2013 = 797.7mm

2012 = 1112.5mm

2011 = 651.6mm

Last year was the third wettest on national record.