

# Course Managers report

## February 2015

### COURSE WORK

Course maintenance week is coming soon (9<sup>th</sup> March to the 13<sup>th</sup> March)

If the weather is on our side we will carry out the following.

- Scarifying to a depth of 10mm
- Solid tinning to a depth of 18cm
- Top dressing with 40 tonnes of pure sand
- Fertilising

With our staffing levels at the moment this work could take all week to carry out. Members need to know that this means that the greens could be on temporaries for the whole week.

If the weather is against us we will change the program to suit.

### Greens

The greens have been fed with the winter feed.

They have also had a soil surfactant applied to aid percolation rates.

### Approaches

A moss treatment will be applied soon and after this they will be scarified and top dressed.

### Tees

As you will have seen the lines on the tees are where we used the ground breaker to aerate. These continues slits are 4inches (10cm) deep.

When we purchase new tines for this machine we will be able to aerate to a depth of 10 inches (25cm)

A moss treatment will also be applied to the tees like the approaches. We will then scarify.

When the weather heats up we will over seed all the tees and top dress selected tees.

### Fairways

These need to be swept soon weather permitting.

### Bunkers

We have started to edge the bunkers. Once we have done them all I will get some sand in to top up.

### Long Rough

We will cut more as and when we can.

### Ditches

We have been unable to install the ditch on the 3<sup>rd</sup> due to other required work.

### White lines

The lines are back, please could all members be made aware as I still see buggies and trolleys past these lines

### Temporary greens

It is better to have and not need, than to need and not have.

These are a last resort. If the greens are playable then they will be open.

When work is being carried out on a green the temporary for that hole might be used until the work is finished.

### Trees

We have crown lifted tree around the course and so far the feedback form the members has been positive.

## Volunteer day

The first one was today (10<sup>th</sup> February) I am happy to say it went very well and we will have another day next Tuesday (17<sup>th</sup> February)

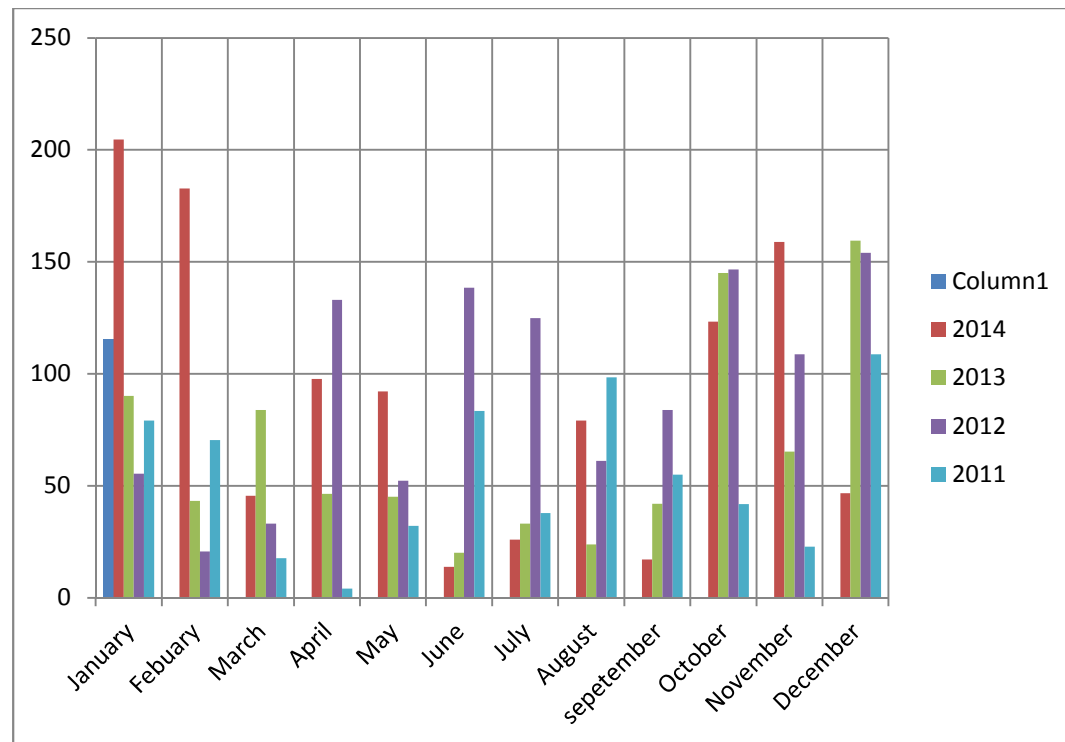
## Course status

The table below shows the number of day the course has been open or closed and the number of days that trolleys and buggies were allowed for each month.

Month	Days closed	Days open	Trolleys allowed	Buggies allowed
January	0	31	25	23

## RAIN

See table below for how much rain we have had so far.



Total rain fall

2015 = 115.5mm

2014 = 1088.1mm

2013 = 797.7mm

2012 = 1112.5mm

2011 = 651.6mm

Last year was the third wettest on national record.