

Course Managers report

January 2015

COURSE WORK

Due to the current weather conditions we have been concentrating on keeping the course open and playable, we are clearing the greens daily of debris repairing badger damage and other work just to get course open, this is taking up the mornings. Aeration is being carried out on the greens monthly to keep as many open as possible for as long as possible. With our current staffing levels this has reduced the amount of winter work that is possible. I.e. pathway maintenance, tree management, gorse clearing, heather management, aeration to outfield areas, digging ditches and other tasks.

Greens

Drainage. Some of you will have seen the green staff drilling holes into the greens and then filling them up with gravel. These are mini sumps that we have put in to target the low points on the greens (where puddles form). As the gravel settles some of the plugs will sink, we will level these when it happens.

Green	1	2	3	4	8	10	15	17	18
Number Of sumps	4	1	4	6	31	4	4	9	5

These sumps will help reduce the amount of time that puddles are on the greens.

Approaches

Cut weekly to maintain.

Tees

The 4th tee had 50m of drainage installed to help with the weather.

We will aerate the tees with the ground breaker. This will help with compaction but also cut tree roots that are in the surface of the tees.

The mat on the 14th has been moved as requested by the Manco committee.

Fairways

Are cut when needed

Rough

3 big sumps have been put into the rough on the 10 where the ponds appear after a lot of rain. The sumps were dug with the digger as deep as it would go, then filled with gravel and topped off with sand. We have seeded these so that they are more free draining. This will help but not cure the problem. To cure it we would have to install piped drainage in these areas.

Long Rough

We will cut more as and when we can.

Ditches

We have been unable to install the ditch on the 3rd due to other required work.

White lines

The lines are back, please could all members be made aware as I still see buggies and trolleys past these lines

Temporary greens

It is better to have and not need, than to need and not have.

These are a last resort. If the greens are playable then they will be open.

When work is being carried out on a green the temporary for that hole might be used until the work is finished.

Trees

We have started to crown lift some trees on the 1st and the waste has been used to create a physical boundary by the first green, where the fence line keeps being cut.

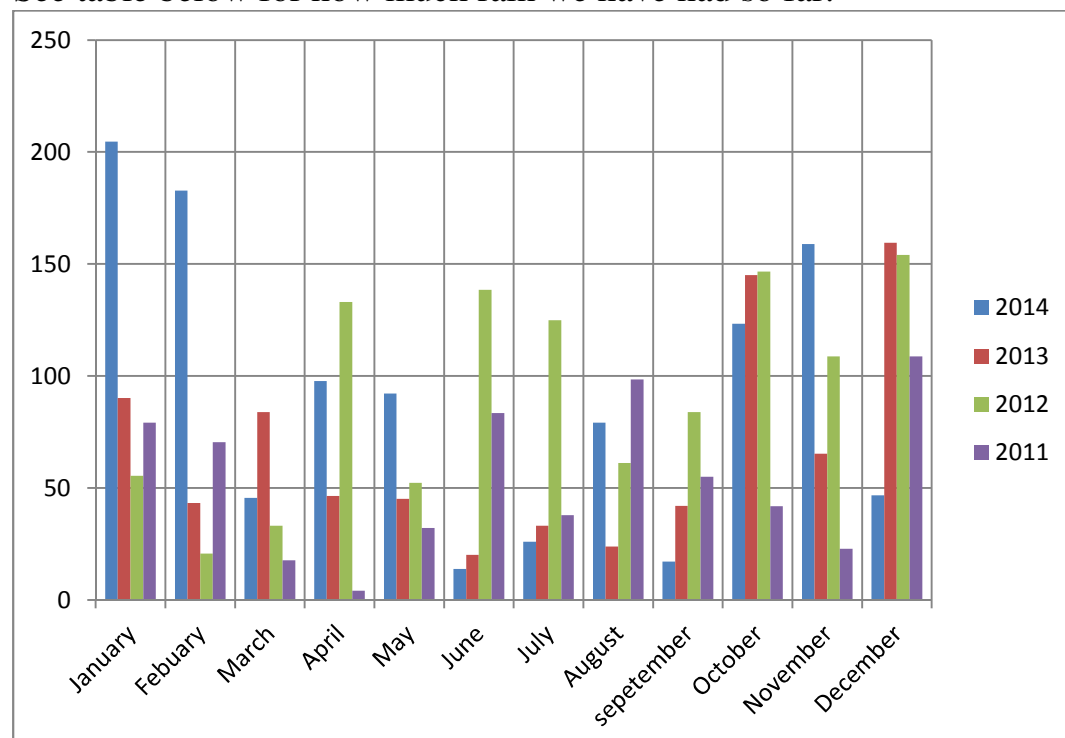
We have planted 22 scot pines on the 2nd hole.

Information

I am also using twitter daily.

RAIN

See table below for how much rain we have had so far.



Total rain fall

2014 = 1088.1mm

2013 = 797.7mm

2012 = 1112.5mm

2011 = 651.6mm

Last year was the third wettest on national record.