

COURSE MANAGER REPORT

March 2013

COURSE WORK

Course work week has been and gone and it went well, please see below for what was done to the greens.

The next course work week is the 23rd September 2013.

I want to book the following dates for the next two years.

2014, March 3rd to the 7th and September 22nd to the 26th.

2015, March 9th to the 13th and September 21st to the 25th.

Competitions need to be booked around these dates as this work is vital in providing a good quality playing surface.

Greens

We hollow cored to a depth of 2 inches and then scarified to remove organic matter from the greens. I did not put the greens back into play after this stage as I wanted the holes to stay open for the top dressing.

We applied 20 tonne of top dressing to firm up the surface; this is why they looked yellow for a while. After the dressing had been brushed in the greens went back on.

We will be doing this operation again in September to keep on top of the hatch.

Fairways

The 6th was treated with an insecticide. This is why you will have seen leather jackets on the surface.

Approaches

These were also treated with the same insecticide as the 6th fairway.

Bunkers

We will edge the bunkers soon and at this point we will check how much sand is in each bunker and where so that there is an even covering over the bunker.

Only after we have done this will we order sand in.

We have to change the sand type as the quarry has stopped producing the type we were using. I am getting samples in to see which one we go for.

Pathways and Mats

The 8th has been raked out so that members can use it.

Irrigation

We have fired up the system and are repairing leaks and broken sprinklers.

GENERAL

Environmental areas will start to appear around the course and will be marked with blue posts. Free relief is to be taken from these areas. (Local rule). These include new heather areas. (Brashing and areas back to mineral soil).

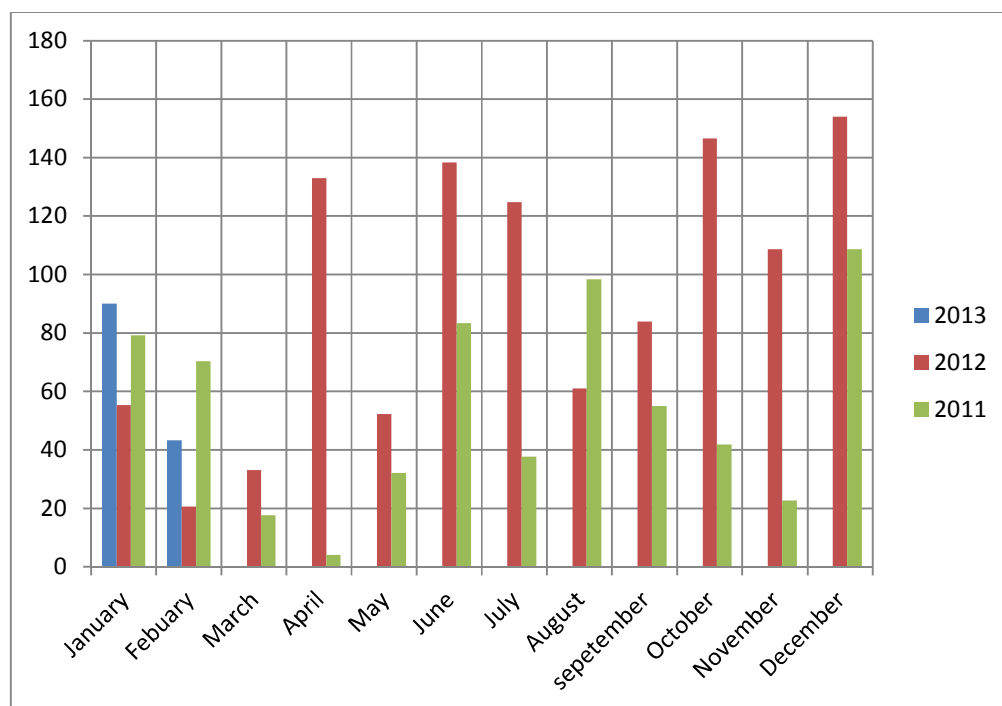
Long term ground under repair (GUR) will also be marked with blue posts. This is to reduce cost, as to white line around these areas each week would be expensive.

WORK TO COME

We will be pushing on with the 4th tee to get complete as soon as possible. Edging the bunkers is the next main program.

RAIN

See table below for how much rain we have had so far.



Total rain fall

2011 = 651.6mm

2012 = 1112.5mm

2013 = 133.4 mm

PROJECTS

Bunkers

All the new bunkers will be in play from the 27th March 2013

Approach

This will be in play from 27th March 2013

Path

8th, we have re-leveled this so that it can be left until we are able to complete.

Tee

4th Blue/Medal tee

As you will have seen this has been leveled and turfed.

White/General play tee

We have imported rootzone and are in the process of compacting and leveling.

Once this has been complete we will turf the tee.

At the moment we are about 10 weeks behind on the 4th tee because of the weather conditions.

Because of the delay the tee will not open as intended on the 1st of April.

We will have to manage the use of both tees as the turf has not had the time to establish.

For competitions the blue tee will be open but not for practice.

The white tee will be open as soon as possible but it will need to be rested some times to protect it. This means that the matt will need to be in use through the year.