

# **COURSE MANAGER REPORT**

**September 2014**

## **COURSE WORK**

As you will have seen due to the rain at the end of August the golf course has started to grow again, we have to cut tees, approaches, fairways and rough more often. As a result bunkers are only being patched throughout the week and some jobs have been dropped totally.

### **Greens**

We had an outbreak of microdochium patch. This was treated straight away but you can still see some scaring on the 5<sup>th</sup> and 6<sup>th</sup> greens.

Work to come includes.

- Maintenance week
- Scarified once or twice depending on ground conditions
- Verti drained with 20mm tines 7 inches deep.
- Top dressed with 60 tons of sand
- Over seeded with bent grass
- Fed with organic feed

Hollow coring removes more organic matter (thatch) than scarifying but as we do not have enough staff to carry out the hollow coring we are going to scarify the greens and then verti drain them after.

The greens needed a top dressing two weeks before the men's invitation day but we were unable to carry this out due to a member of the green staff being on holiday which only left 3 staff to carry out the normal maintenance.

### **Approaches**

The approaches will be scarified, verti drained, over seeded and top dressed with all the dressing left over after the greens have been dressed.

These have had

- Application of fertilizer + growth regulator
- Application of sea weed
- Sarel rolled

### **Tees**

The par 3 tees will be scarified, verti drained, over seeded and top dressed. Once this has been done the tees will be out of play for the winter.

The par 4s and par 5s will be scarified, verti drained and over seeded. We do not have enough money to top dress these tees.

## **Fairways**

These are cut at the height of 18mm, this hasn't changed all year.

We have to cut the fairways twice a week at the moment but this will increase when the grass grows faster until winter comes.

The fairways need to be divoted but we do not have enough staff to do this while maintaining the rest of the course.

The mats will return as this will save some labour divoting two fairways all winter.

## **Rough**

We are cutting this as much as possible but this is the one area that is being left.

## **Long Rough**

We will cut more as and when we can.

## **Ditches**

The ditches approved by the committee will be dug in November and the spoil will be used to improve bare areas around the course.

## **Irrigation**

The 4<sup>th</sup> box has been looked at again but it needs to be fully striped down and re made completely.

The last rain we had was the 1<sup>st</sup> of September and this was only 0.5mm.

The tees are being watered regularly but because of the placement of the sprinklers they are not very effective. When possible I have one of the staff hand watering the worse tees but the staff is flat out carrying out the normal maintenance.

## **White lines**

These will be back from the 1<sup>st</sup> October or sooner if I keep seeing members driving the buggies and taking trolleys around the backs of greens, in-between bunkers and greens and onto the tee banks instead of parking them on the pathways by the tees.

## **Temporary greens**

It is better to have and not need, than to need and not have.

We will have temporary greens just in case we have another bad winter. These will be installed after the course maintenance week and they will also be white lined to stop members playing off of them.

## **Boundaries**

The decision by the council has been made about what work can be carried out in the tree preservation order area TPO.

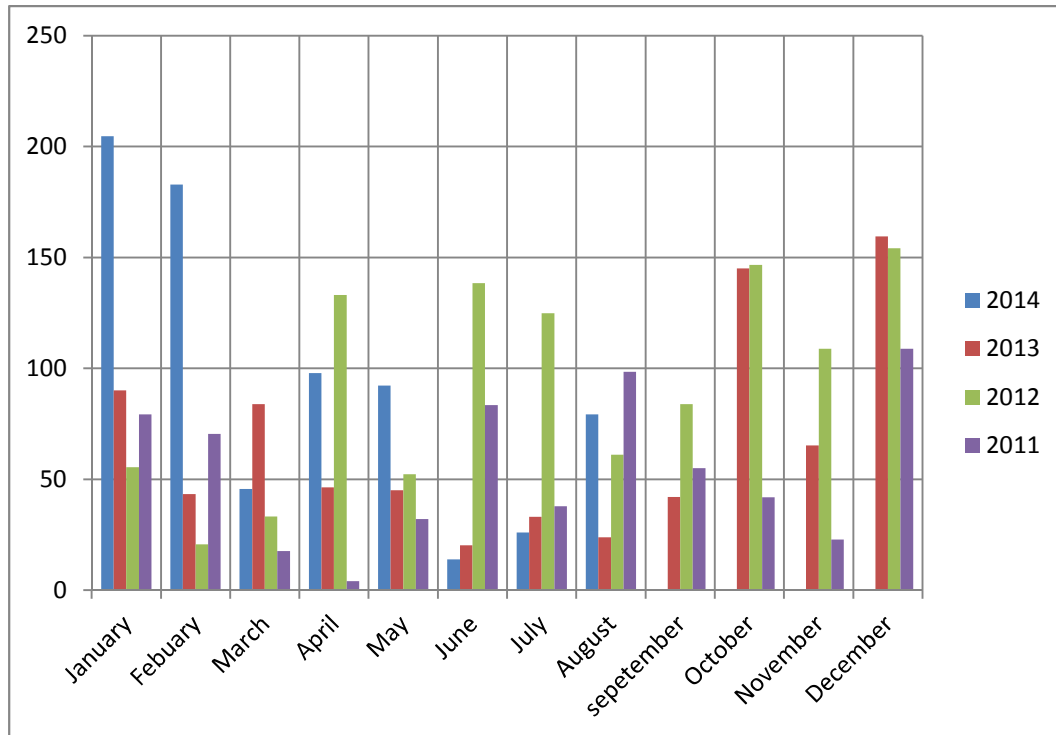
They have made a split decision.

The crown lifting to 5 meters and felling of some trees has been passed.

The crown thinning has been denied.

## RAIN

See table below for how much rain we have had so far.



Total rain fall

2014 = 742.1mm

2013 = 797.7mm

2012 = 1112.5mm

2011 = 651.6mm

Areas identified	Improvements required	Consequences	Cost Implications
1. Tees	a) Daily devoting with added fertilizer and top dressing. b) Improved sprinkler system.  c) New Tees where required.	More greens staff, extra spend on divot mix and fertilizer. Replacement sprinkler system or hand water.  (See 5 year plan)	Staff wages, materials.  £220K including borehole or additional staff/wages for hand watering. (See 5 year plan)
2. Fairways	a) Fairway irrigation system. b) Fairway drainage. c) Improve fairways root zone.  d) Fir tree roots on fairways.	New fairways sprinkler system. (See 5 year plan). Top dress fairways throughout year.  Remove trees or cover roots with grass mounds.	£250k approx.  (See 5 year plan). Between £500 and £900 per fairway per application. Contractor costs for removal of trees and roots or top soil, turf and more staff for grass mounds.
3. Carries & Rough	a) Keep heavy rough under control throughout the year. b) Bare areas round paths and greens.	Cut more often and remove Ferns by hand. Repair areas with new turf.	More staff/wages.  Top soil, turf, staff and fertilizer.
4. Pathways	a) Tidy and level	Available resources.	More staff and materials
5. Greens	a) Continued management and ongoing maintenance to keep greens in present good condition.	(See 5 year plan), also replacement sprinkler system.	(See 5 year plan) also £220K including borehole for sprinkler system.
6. Bunkers	a) Re-shape and replace bunker sand to improved quality and consistency.	(See 5 year plan)	(See 5 year plan) and double cost of bunker sand

**Note:** A replacement sprinkler system for Greens, Approaches and Tees has been costed and includes a borehole, storage tank and pump house upgrade. For the addition of a Fairway sprinkler system the estimates are about a further £250K/.

The above table represents an overview of the course requirements. Unless we attend to most of these issues our course will never improve and the ongoing criticism by will continue.

Most of the criticism by members is unfair as they forget that this is a heathland course with poor soil and limited resources. Most of the so called scruffiness on the course has always been there in line with the weather throughout the year. The last two years weather has been a nightmare for the staff to cope with, but they have exceeded my expectations given our current circumstances. In order to turn our course into something approaching 'Parkstone', we would need to do all of the above, including the doubling of our greens staffing levels.