

COMMITTEE REPORT

February 2013

COURSE

Due to the continued wet weather we have experienced from April 2012 to now, the course is at field capacity and it does not take much to saturate the course to the point that it is unplayable.

This is why the course closes at the moment because it is not possible to find relief from casual water.

I thank you for your continued understanding over this matter.

Greens

We are cutting as and when we can due to the continued weather conditions. We have treated the greens with a fungicide because of the disease that is present.

We will verti drain the greens soon.

Tees

We are cutting as needed.

Fairways

We have to cut at the moment due to the growth.

New 150 posts have been fitted. These are measured to the centre of the greens.

Approaches

We are cutting when we can due to the growth.

The holes are changed when needed.

Bunkers

We do not rake the bunkers when rain is forecast on that day as this would be a waste of labour.

Long rough

We are continuing to cut these areas when we can.

Pathways and Mats

The 8th is settling and the members can use this instead of the tarmac path if they wish.

Irrigation

We will replace broken sprinklers and repair leaks in the spring.

Machines

We are servicing all the machines ourselves to keep costs down.

Some servicing cannot be done in house so this will be out sourced

GENERAL

Environmental areas will start to appear around the course and will be marked with blue posts. Free relief is to be taken from these areas. (Local rule). These include new heather areas. (Brashing and areas back to mineral soil).

Long term ground under repair (GUR) will also be marked with blue posts. This is to reduce cost as to white line each week would be expensive.

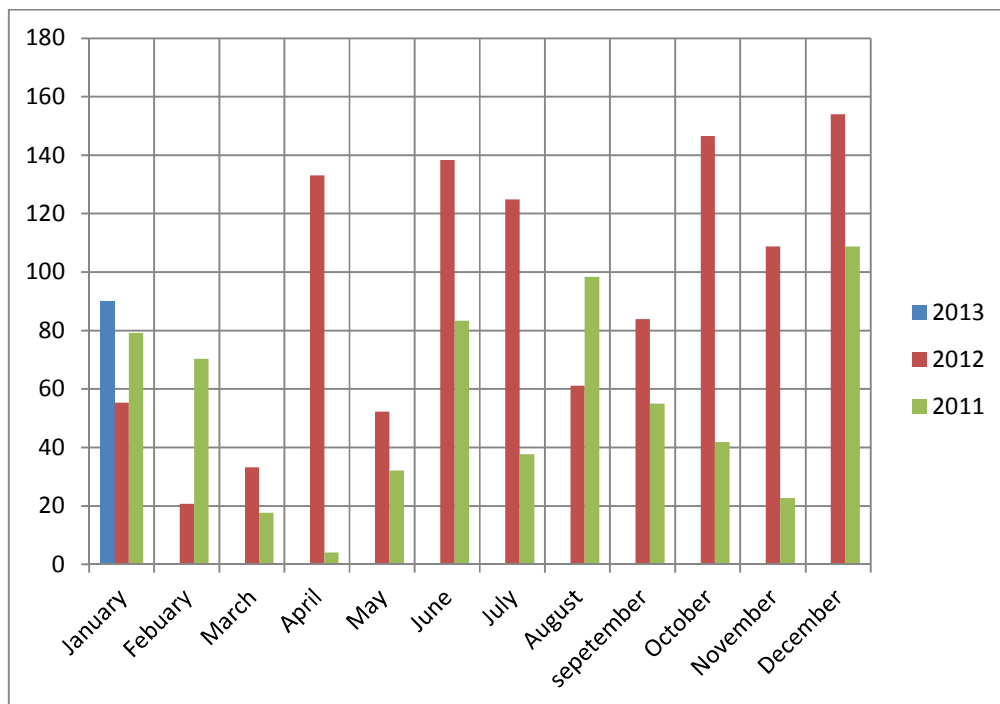
WORK TO COME

When it dries out we will continue with the 4th white tee.

While the weather stays bad we will carry on with the tree work. Please see the 5 year tree plan

RAIN

See table below for how much rain we have had so far.



Total rain fall

2011 = 651.6mm

2012 = 1112.5mm

PROJECTS

Bunkers

13th Bunkers

Complete

17th Bunker

Complete

Approach

13th Complete

Path

8th, this has been left to allow the area to settle.

Tee

4th Blue/Medal tee

As you will have seen this has been leveled and turfed.

White/General play tee

We have started to level this but we are taking out some small areas of soil that are still very wet and we will replace these with better soil. This will allow us to carry on and get the tee finished.

At the moment we are about 7 weeks behind on the 4th tee because of the weather conditions, we will work on the tee when we can but we need some good weather to help out.