

COURSE MANAGER REPORT

August 2014

COURSE WORK

Greens

To treat the fungi that cause fairy rings you have to get the fungicide into the soil. To do this we had to aerate the greens and then apply the fungicide with a wetting agent, the wetting agent holds the fungicide in the soil profile for longer allowing it to have a maximum effect on the fungus.

Work to come includes.

- Application of seaweed
- Application of wetting agent
- Application of fertilizer + growth regulator
- Aeration (pencil tinning)
- Treatment for fairy rings
- Top dressing

And all the normal day to day work that is carried out.

The strong winds that we had on the Sunday after the Men's Open caused a lot of needles and branches to come down. The whole of Monday was spent blowing the greens and tees just to get the course playable. The rest of the week will include more clearing up just to get back to normal.

Approaches

These have had

- Application of fertilizer + growth regulator
- Application of sea weed
- Sarel rolled

To do

- Application of fertilizer + growth regulator

And all the normal maintenance

Tees

The 5th men's tee is struggling. This is due to the dry weather and the irrigation system not being able to keep up with demand. Also the sprinkler placement on this tee is wrong. On the men's tee we have 2 sprinklers placed on the left and right side of the tee in the middle.

This means to water the tee fully we are wasting water on the carry and behind the tee in the trees. We have put 2 new divot boxes out on the course on the men's 6th and 12th holes.

These have had

- Application of fertilizer + growth regulator

To do

- Application of fertilizer + growth regulator
- Aeration

And all the normal maintenance

Fairways

These are cut at the height of 18mm, this hasn't changed all year.

We are cutting once a week due to the reduced growth on the fairways.

Rough

Work includes

- Cut every week to keep on top of the growth

Long Rough

We have cut some areas of long rough, these areas are where the majority of golf balls end up (left of the 4th) other areas around the course will be cut as and when we have the time.

Ditches

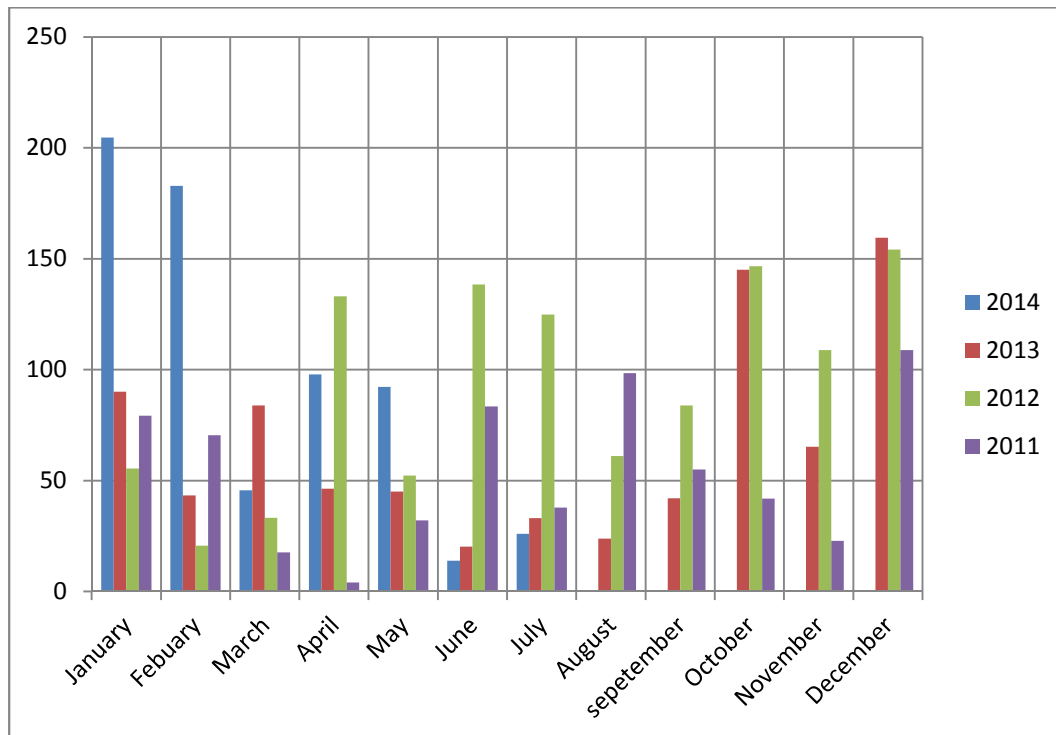
The ditches approved by the committee will be dug in October/November and the spoil if will be used to improve bear areas around the course.

Helper days

We are going to arrange helper days in February 2015. Members will be encouraged along to help clear up branches and needles that have fallen over the winter.

RAIN

See table below for how much rain we have had so far.



Total rain fall

2014 = 662.9mm

2013 = 797.7mm

2012 = 1112.5mm

2011 = 651.6mm