

# **COURSE MANAGER REPORT**

**July 2014**

## **COURSE WORK**

### **Greens**

We have been sarel rolling the greens every two weeks ( a sarel roller is a drum with metal spikes, when taken over the greens the spikes go in about an inch allowing gas exchange and water to penetrate the surface easier).

The height of cut is still 3.5mm (the same as Hoylake)

Work to come includes.

- Application of seaweed
- Application of wetting agent
- Application of fertilizer + growth regulator
- Aeration
- Treatment for fairy rings
- Top dressing

And all the normal day to day work that is carried out.

Fairy rings are caused by fungi in the soil profile, to treat this we have to pencil tine the greens down to 4 inches and apply a fungicide with a wetting agent to get the fungicide far enough into the soil profile to have an effect on the fairy rings.

### **Approaches**

These have had

- Application of fertilizer + growth regulator
- Sarel rolled

To do

- Application of fertilizer + growth regulator
- Aeration (sarel roll )

And all the normal maintenance

### **Tees**

These have had

- Application of fertilizer + growth regulator

To do

- Application of fertilizer + growth regulator
- Aeration

And all the normal maintenance

## **Fairways**

Work carried out includes

- Cut with the rotary mower to remove the stalks
- Application of fertilizer + growth regulator

To do

- Cut with the rotary mower to remove stalks.

As you will have noticed we are striping the fairways.

Extra fertilizer has been applied to the 1<sup>st</sup>, 10<sup>th</sup> and 15<sup>th</sup> to help with the recovery from the winter.

## **Rough**

Work includes

- Cut every week to keep on top of the growth

## **Long Rough**

We have cut some areas of long rough, these areas are where the majority of golf balls end up (left of the 4<sup>th</sup>) this is to make the golf course fairer

## **Trees**

The neighbor left of the 18<sup>th</sup> hole has asked for the tree that fell over to be cut up. This is not in play and we will not cut it up until winter.

## **Ditches**

The ditches approved by the committee will be dug in October and the spoil if will be used to improve bear areas around the course.

## **Irrigation**

The dry weather has shown up how ineffective the current system is. We are having to hand water just to keep sections of the greens alive. The greens and tees are being watered regularly but as you can see there are a lot of dry patches. This is due to the type and placement of the sprinklers. The pressure is insufficient in a lot of the section which means the sprinklers do not work properly.

## **Helper days**

We arranged a helper day on the 10<sup>th</sup> July at 4pm.

Two people put their names down before the day. By the day there was only one name and he could only do 1 hour. For this reason it was cancelled.

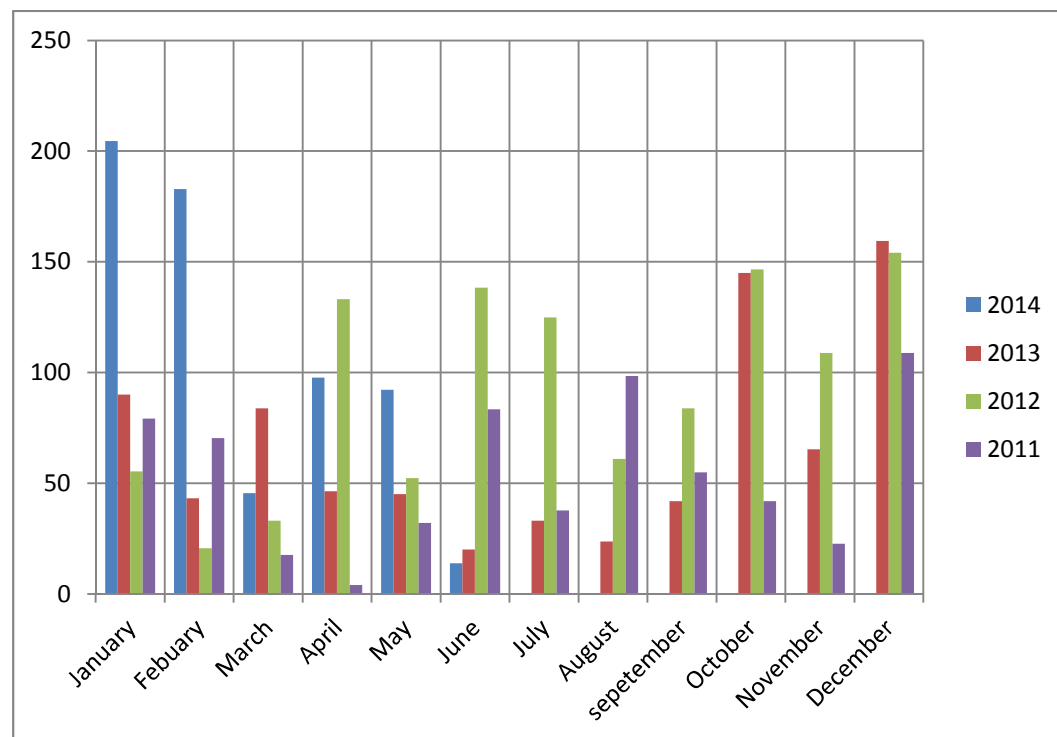
I think that we have tried to do too many of these days to close together and this is why the attendance has been getting smaller.

## Boundaries

I have applied again to the council and the decision will be made by September about the work to be carried out by the 14<sup>th</sup>/15<sup>th</sup> teens that the neighbours have requested.

## RAIN

See table below for how much rain we have had so far.



Total rain fall

2014 = 636.9mm

2013 = 797.7mm

2012 = 1112.5mm

2011 = 651.6mm