

COURSE MANAGER REPORT

May 2013

COURSE WORK

Greens

They have been verti drained and verti cut before being top dressed. The height has also been lowered and it will stay at this height throughout the summer (if we have a good summer that is)

We are going to top dress soon which will smooth out the surface even more.

Approaches

We are at the summer height now.

The 3rd has been marked with orange paint purely to identify the area and this will be done until semi rough grass has grown around it.

Tees

The height has been lowered and they have been fed also in the last week.

Fairways

We have started to cut these more often as the growth has picked up.

We will feed and spray them for weeds soon.

Bunkers

I am still waiting on the supplier for the new sand that has been chosen.

Rough

We are cutting this at every opportunity as it is growing so fast.

Irrigation

This has been on a few times now and it is all working well so far.

Machines

The John Deere tractor is in the process of being fixed.

GENERAL

Long term ground under repair (GUR) will be marked with blue posts.

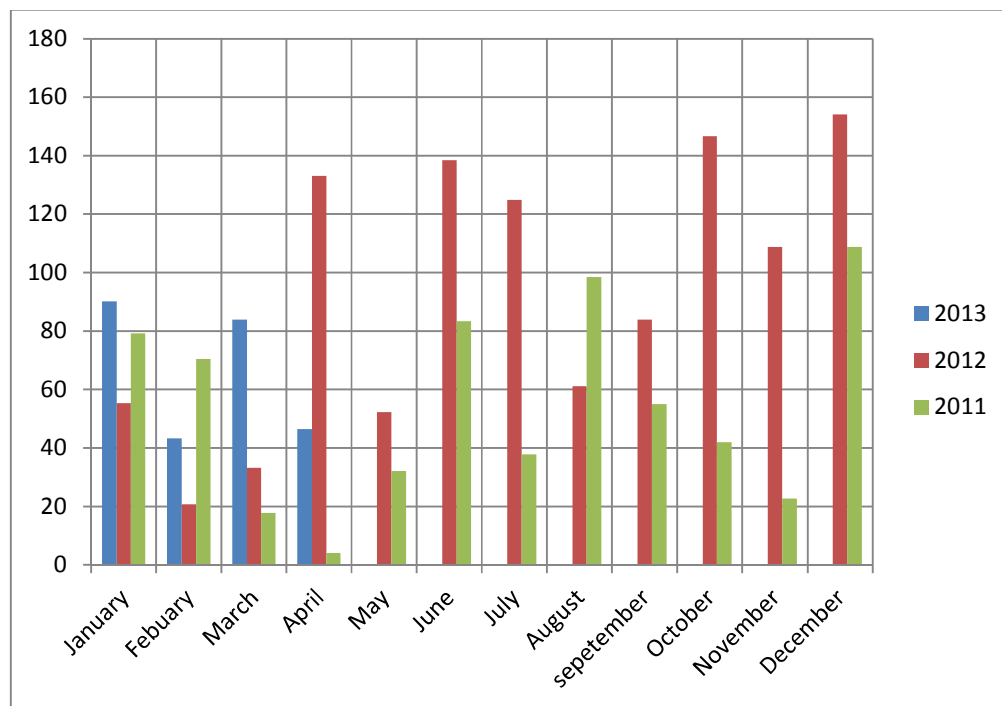
This is to reduce cost, as to white line around these areas each week would be expensive.

5th Hole

The animal damage has been marked with blue posts at this time. The damage under the trees is also that of animals please take relief hear also.

RAIN

See table below for how much rain we have had so far.



Total rain fall
 2011 = 651.6mm
 2012 = 1112.5mm
 2013 = 180 mm

PROJECTS

Bunkers

Complete and in play.

Approach

Complete and in play.

Path

8th, we have re-leveled this so that it can be left until we are able to complete.

Tee

4th Blue/Medal tee

In play for competitions only, no practice is to occur from this tee.

White/General play tee

This will come into play soon.

At the moment we are about 10 weeks behind on the 4th tee because of the weather conditions.

We will however have to manage the amount of play when the tees are opened as we don't want to damage the turf.