

COURSE MANAGER REPORT

September 2013

COURSE WORK

Greens

Course maintenance week is soon and an information sheet has been put on the course information board. Some members are asking why they will be on temps when this work is being carried out. This because if we were to do each green completely one at a time the amount of time to complete the work will almost double, so instead of up to one week it would take up to two weeks.

Work that will be carried out (weather dependent)

Hollow coring, scarifying, fertilizing, over seeding, topdressing.

Approaches

These have dried out as there is not adequate coverage from the irrigation system.

Tees

We are having a lot of damage on the tees from badgers at the moment. We have treated their food source to try and stop the damage, this has not worked as well as expected. We are repairing the damage daily.

In October we will be over seeding all the tees.

Fairways

At the start of October we will over seed a couple of the bearer fairways.

Bunkers

These have been edged.

Rough

We are cutting the lush areas more often and at the moment doing a full cut every two weeks to keep the stalks down.

Boundaries

The trees on the 13th and 15th holes have been taken down. The trees along the boundary on the 15th have been checked for dead and dangerous branches and these have been removed also.

The planning has gone in for the safety fence along the 9th and 13th holes.

We have however had to have a report on the trees along these areas for planning.

Because of all these extra restrictions that seem to be put on this job I think it would be advisable to get the company in who gave the original quote and get them to re-quote, as the price may increase.

Irrigation

The irrigation survey has taken place and I have just received the report. More to follow in next months report.

VANDALISM

CCTV signs have been put up on the boundary fences to try and keep the little darlings out of the golf course.

The only other damage has been from animals. (See tee section)

5 YEAR IMPROVEMENT PLAN

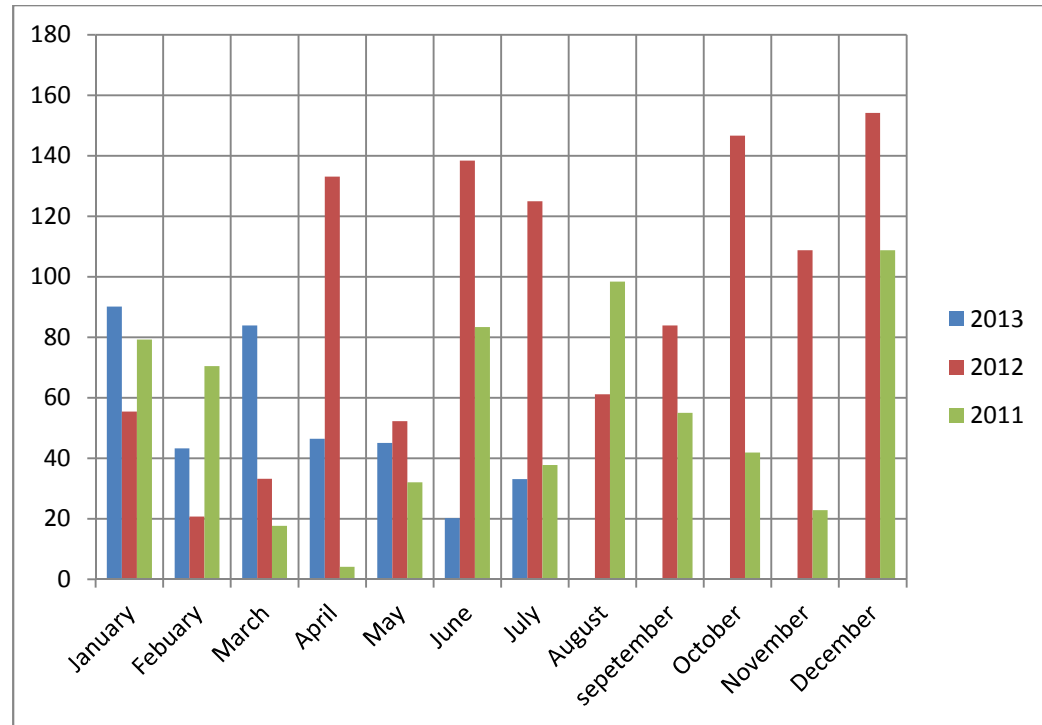
The quote for the design and construction has been sent in and because of the boundary issues these have been put on hold.

The improvements that are carried out in house have also been put on hold for this winter because of the boundary.

This means we will be carrying out more woodland work this year.

RAIN

See table below for how much rain we have had so far.



Total rain fall

2011 = 651.6mm

2012 = 1112.5mm

2013 = 362.1mm

OTHER ITEMS

The front gate has had the bolt put on it so it can be locked. The padlock that we have to use is called a FB lock, this means that all the emergencies service have a key for it already.