

COURSE MANAGER REPORT

May 2014

COURSE WORK

Greens

We have verti drained the greens with 13mm pencil tines.

They were top dressed with 10 ton of sand to smooth out the surface.

The height has been reduced to 4mm

Work to come includes.

- Application of seaweed
- Application of wetting agent
- Application of fertilizer + growth regulator
- Application of moss control
- Aeration
- Application of thatch away
- Top dressing

And all the normal day to day work that is carried out.

Approaches

These have been

- Verti drained
- Top dressed
- Application of fertilizer + growth regulator
- Application of a long term wetting agent

To do

- Over seed
- Application of fertilizer + growth regulator
- Aeration

And all the normal maintenance

Tees

These have been

- Verti drained
- Application of fertilizer + growth regulator
- Application of a long term wetting agent

To do

- Application of fertilizer + growth regulator
- Aeration

And all the normal maintenance

Fairways

To do

- Application of a selective weed killer
- Cut with the 4300 to reduce the stalks

The 1st, 10th and 15th are progressing well. The seed has started to germinate however we will still need to protect the 10th and 15th hole by using the mats.

We are still on preferred lies due to this.

An application of fertilizer has been made to all 3 fairways to help the new and existing grasses.

Temporary greens

The temporary greens and holes will be removed at the end of May. If however the weather dictates otherwise.

Trees

The trees that were blown down in the last storm are still needing to be cut up, but as they are not in play they can left until we have time to cut them up.

Uptons came in and removed more hanging branches from the 15th and behind the 16th greens. This was already paid for within the insurance claim.

Ditches

We need to put a ditch along the 4th tree line on the left side from the flat area near to the old bunker. This is so that we will be able to drain the flat section of the fairway.

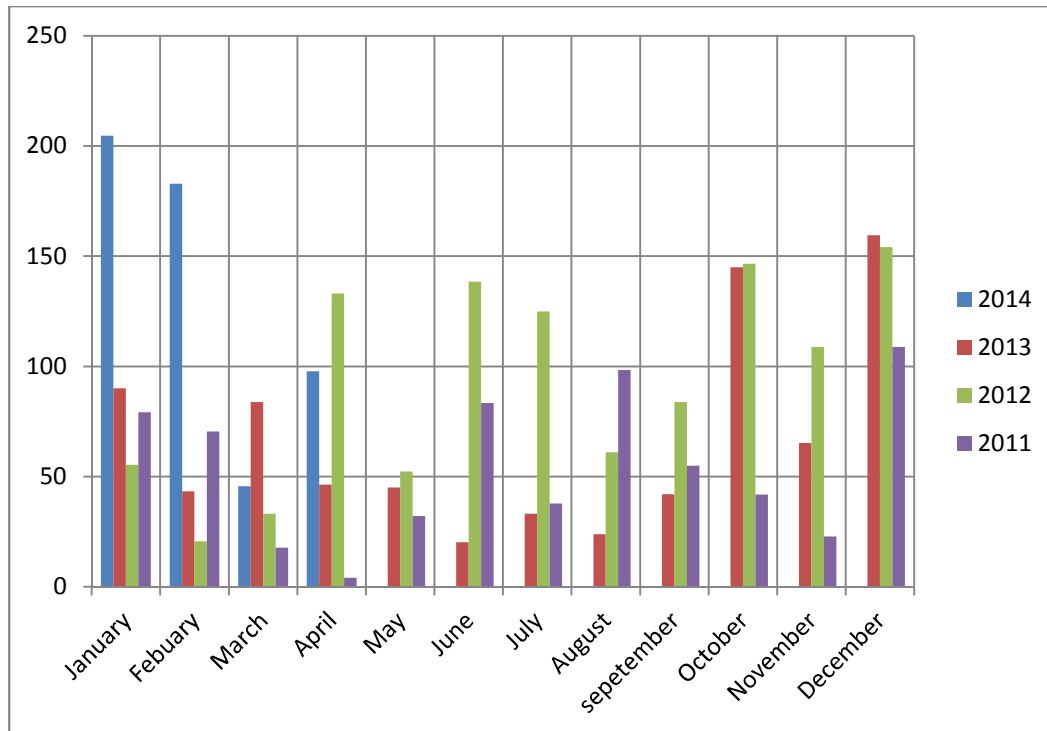
If we have time we will carry out this work soon as the left hand side of the rough is still water logged.

Irrigation

We are replacing sprinklers and pipe work as needed.

RAIN

See table below for how much rain we have had so far.



Total rain fall

2014 = 530.8mm

2013 = 797.7mm

2012 = 1112.5mm

2011 = 651.6mm