

## **COURSE REPORT**

### **December 2012**

#### **COURSE WORK**

##### **Greens**

We are currently verti draining the greens.

We are cutting as and when we can with the weather conditions.

##### **Tees**

Mats and winter tees are in use.

##### **Fairways**

We have finished verti draining the fairways.

##### **Approaches**

The temps in the approaches are working well.

The holes are change when needed.

##### **Bunkers**

The new bunkers have been turfed and the first layer of sand has been put in.

##### **Long rough**

We are continuing to cut these areas when we can.

##### **Pathways and Mats**

The 8<sup>th</sup> is settling and we will continue after the construction on the 4<sup>th</sup> is complete.

##### **Irrigation**

We are replacing the irrigation around the 4<sup>th</sup> tee.

##### **Machines**

We are servicing all the machines ourselves to keep costs down.

Some servicing cannot be done in house so this will be out sourced.

#### **GENERAL**

Environmental areas will start to appear around the course and will be marked with blue posts. Free relief is to be taken from these areas. (Local rule).

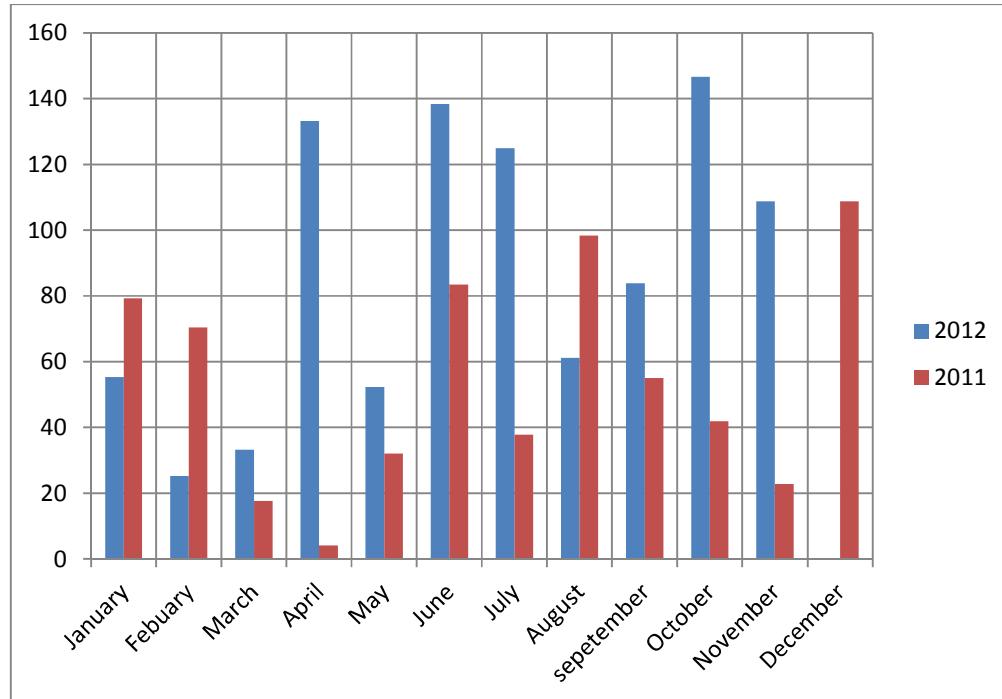
These include new heather areas. (Brashing and areas back to mineral soil).

Long term ground under repair (GUR) will also be marked with blue posts.

This is to reduce cost as to white line each week would be expensive.

## RAIN

See table below for how much rain we have had so far.



As you can see we have had our share of the rain this year.

Total rain fall

2011 = 651.6mm / 26.06 inches

2012 = 962.9mm / 38.5 inches

Difference 311.3mm / 12.45 inches with December to go!

## WINTER PROJECTS

### Bunkers

13<sup>th</sup>, they have been turfed and the first layer of sand has been put in place.

A sump was added to help with drainage.

To reduce stones coming up we put turf upside down in both bunkers.

17<sup>th</sup>, has been turfed and the first layer of sand has been put in place.

A sump was added to help with drainage.

To stop stones coming up we layered the bottom of the bunker with sand, landscape fabric and then upside down turf.

**Approach**

13<sup>th</sup> has been contoured and turfed. This area will be treated as rough, to stop balls rolling onto the green.

**Path**

8<sup>th</sup>, this has been left to allow the area to settle. When we have finished with the construction of the 4<sup>th</sup> tee we will finish the path.

**Tee**

4<sup>th</sup> we are well on the way with the tee.

We have,      Striped the turf.  
                    Striped the topsoil from the lower part of the white tee.  
                    Removed the front of the blue tee.  
                    Dug in the trench line for the irrigation.  
                    Dug in the drain line.

To do next.  
                    Pipe and stone the drain.  
                    Install the irrigation.  
                    Shape and level sub soil.  
                    Level top soil.