

COURSE REPORT - JANUARY 2013

COURSE WORK

Greens

An iron fertilizer was applied.

We are cutting three times a week at the moment.

Some people have questioned what work is carried out at the weekends because of dew on the greens.

When you remove the dew it is possible for a secondary dew to appear and also as is the case for the questioned weekend when you have a lot of moisture in the air (mist or drizzle) this settles as dew.

Tees

Because of the current temperatures we are cutting the grass tees weekly.

We will verti drain again soon.

Fairways

We have to cut at the moment due to the temperatures.

Approaches

We have verti drain.

We are cutting twice a week because of growth.

The holes are change when needed.

Bunkers

We do not rake the bunkers when rain is forecast on that day as this would be a waste of labour.

When we edge the bunkers in March we will also top up low bunkers and break up the sand that is already in the bunkers.

Long rough

We are continuing to cut these areas when we can.

Pathways and Mats

The 8th is settling and the members can us this instead of the tarmac path if they wish.

Irrigation

We will replace broken sprinklers and repair leaks in the spring.

Machines

We are servicing all the machines ourselves to keep costs down.

Some servicing cannot be done in house so this will be out sourced

GENERAL

Environmental areas will start to appear around the course and will be marked with blue posts. Free relief is to be taken from these areas. (Local rule). These include new heather areas. (Brashing and areas back to mineral soil).

Long term ground under repair (GUR) will also be marked with blue posts. This is to reduce cost as to white line each week would be expensive.

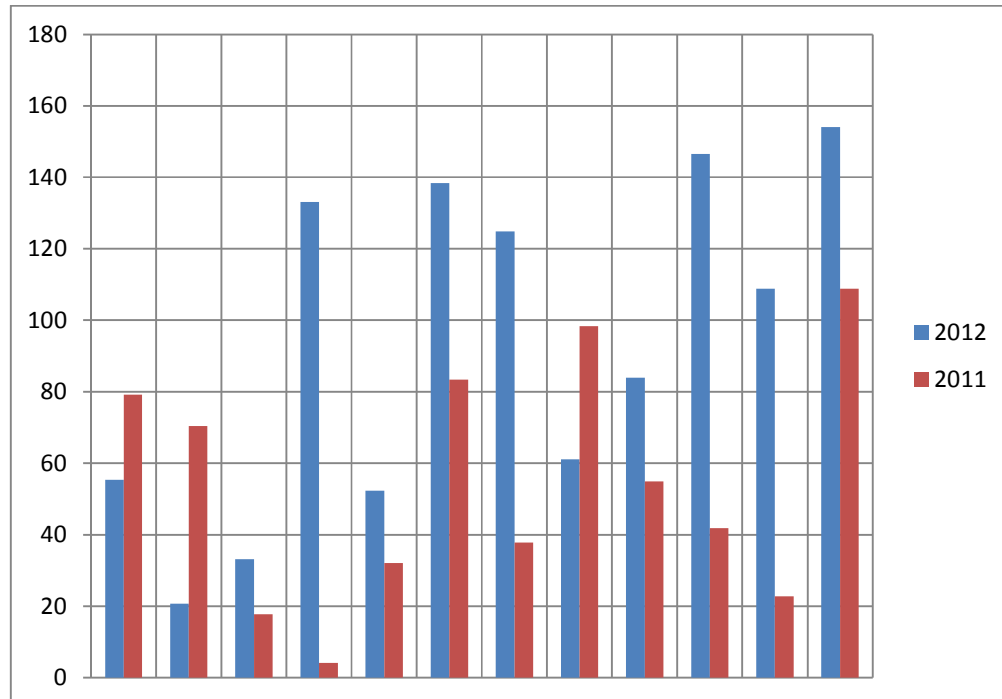
WORK TO COME

If the weather says good then we will carry on with the 4th tee and cutting the long rough/heather areas + normal maintenance.

If we have a cold spell we will start the tree work. This will include pruning up trees all around the course. We will need to remove some trees to improve the golf course.

RAIN

See table below for how much rain we have had so far.



As you can see we have had our share of the rain this year.

Total rain fall

2011 = 651.6mm

2012 = 1112.5mm

Difference 460.9mm

PROJECTS

Bunkers

13th, they have been turfed and the more sand has been put in.

A sump was added to help with drainage.

To reduce stones coming up we put turf upside down in both bunkers.

17th, has been turfed and the sand has been put in place.

A sump was added to help with drainage.

To stop stones coming up we layered the bottom of the bunker with sand, landscape fabric and then upside down turf.

Approach

13th has been contoured and turfed. This area will be treated as rough, to stop balls rolling onto the green.

Path

8th, this has been left to allow the area to settle.

Tee

4th we are well on the way with the tee.

We have, Striped the turf.
 Striped the topsoil from the lower part of the white tee.
 Removed the front of the blue tee.
 Dug in the trench line for the irrigation.
 Dug in the drain line.
 Piped and stoned the drain.
 Installed the irrigation pipe.
 Rough level of the white tee to aid with the drainage.

To do next.

Shape and level sub soil.
Level top soil.
Turf both tees.
Plant heather on the bank like on the 3rd tee.

At the moment we are about 5 weeks behind on the 4th tee because of the weather conditions, we will work on the tee when we can but we need some good weather to help out.