

NOVEMBER LOCKDOWN

2020

Whilst you have been away from the golf course the green keepers have been hard at work carrying out the normal winter maintenance and moving forward with some of the course improvements.

GREENS

- Application of a fungicide.
- Application of a penetrant wetting agent.
- Application of an organic granular fertiliser.
- Verti drained with 12mm tines 230mm deep with 15 degrees heave.
- Hand cut as required.
- Debris cleaned off as require.



TEES

- Application of a winter feed.
- Verti drained with 20mm tines 230mm deep with 15 degrees heave.
- Cut as required.
- Debris cleared off as required.



Winter tees

- All removed and power washed off.
- Replaced and power brushed.
- Treated with Round up and a residual weed killer.

BUNKERS

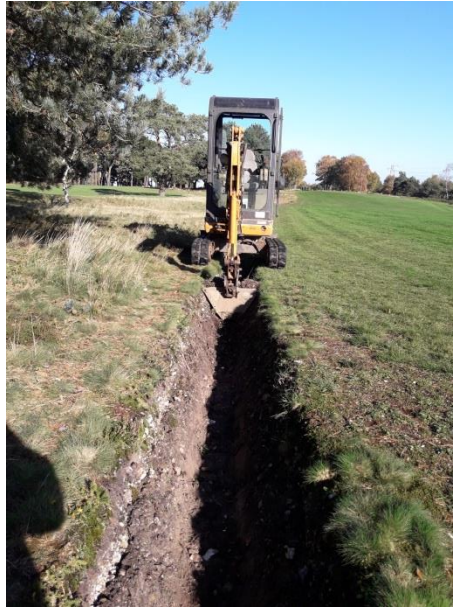
As there has been no golf we have not raked these.

They will however be cleaned out and raked before golf starts again.

We will maintain them daily thereafter.

PENALTY AREAS

Ditches have been cleaned and on the one right of the 10th fairway re dug.



GENERAL

Approaches

- Application of a winter feed.
- Verti drained with 20mm tines 230mm deep with 15 degrees heave.
- Cut as required.
- Debris cleared off as required.



Fairways

- Slit using our large tractor mounted slitter.
- Cut as required.
- Swept and blown.



Semi rough

- Slit the same as the fairways.
- Cut as required.
- Swept and blown.

Paths

Have been blown and will be cleaned for the start of golf.

Trees

Even with the high winds we haven't lost any more trees.

Animal damage

Lots of dog prints in the bunkers. On the 2nd green a small area was dug up and will be repaired.

Information

As you will have seen I have been putting information on Twitter, Facebook and on the clubs website daily about the work that is still being carried out by the green staff.

Winter projects

Due to the pandemic the club has had to reduce the intended plan for the winter projects.

However the committee are progressing with the irrigation replacement program.

We have been able to carry out the following improvements.

10th Hole

A drain has been dug, piped, stoned and re-turfed from the ditch on the right to the left hand rough. We will be adding to this drainage system at a later date.

In the left hand rough a drainage system has been dug, piped, stoned and re-turfed to stop the winter ponds that we have each year.



With the good top soil from the drainage, we used it to extend the backs of the 2nd, 3rd, 10th and 11th tees so that in the future we will have more teeing space for competitions. We still have to level and seed these areas and they will be done over the winter period.

1st tee area

The biggest project this year was to refurbish the path and the area around the 1st tee. As you will have seen from the photographs this project is well on its way and we only have the turfing to complete it.

