

COURSE REPORT

November 2012

COURSE

Greens

The greens have been verti drained.

They have been treated for disease.

The temps are working well. We are keeping the course open for longer in bad weather with the use of the temps.

Tees

Winter tees will be in use from the 5th November, please see attached note on the 18th mat.

Fairways

We are verti draining the fairways now. The mats on the 5th and 13th holes will be used from the 5th November.

Approaches

The temps in the approaches are working well.

13th approach will be turfed soon.

Bunkers

The 13th and 17th bunkers have been started and will be turfed soon.

Long rough

We have started cutting the long rough. Including areas of heather.

Pathways and Mats

Mats will be in use from 5th November.

8th, we are reducing the slope of this pathway making it safer.

Irrigation

We are replacing sprinklers as required and the system will be turned off and drained down soon.

GENERAL

Environmental areas will start to appear around the course and will be marked with blue posts. Free relief is to be taken from these areas. (Local rule).

These include new heather areas. (Brashing and areas back to mineral soil).

I would like to go to the BTME conference in Harrogate in January. There are several workshops and talks that I am interested in attending.

WINTER PROJECTS

I stopped the 5th carry as the way I had planned to do it would not have worked.

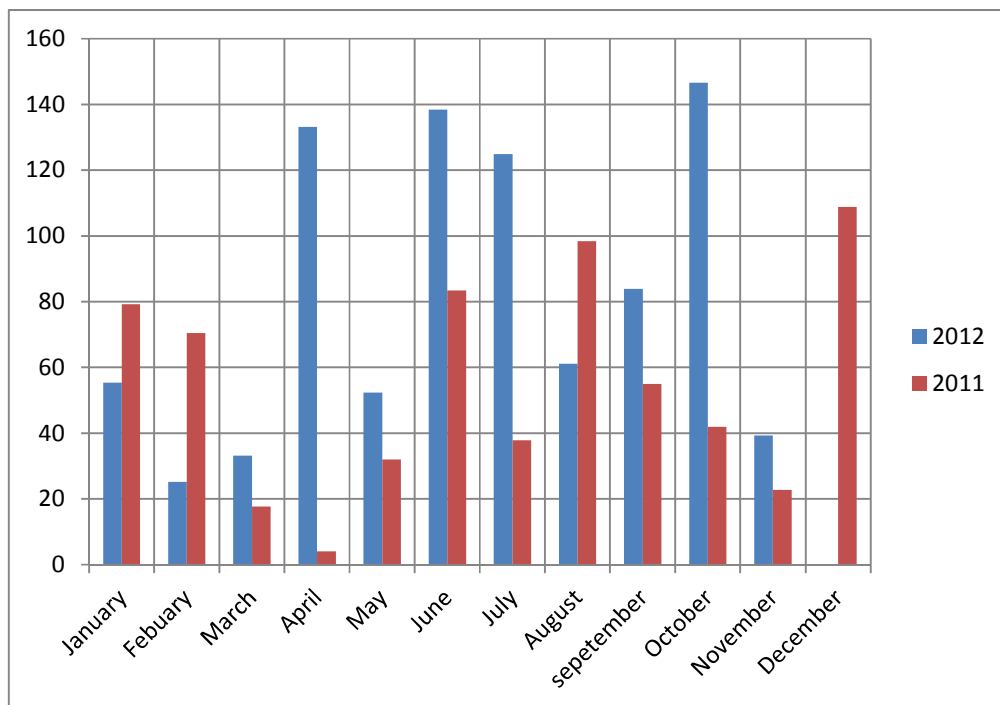
The bunkers are proceeding at a good pace.

The 13th approach has been re-contoured to encourage balls to run off left.

We will start the 4th tee very soon

RAIN

See table below for how much rain we have had so far.



As you can see we have had our share of the rain this year.

Total rain fall

2011 = 651.6mm / 26.06 inches

2012 = 854.1mm / 34.16 inches and 2 months to go!