

COURSE MANAGER REPORT

August 2013

COURSE WORK

Greens

We have pencil tined to keep the surface open.

We have had to double cut to reduce the amount of leaf on the grass plant because of the growth due to the night temperatures.

We have treated the greens for disease

Approaches

We cut and feed as needed.

Tees

These are cut as required and fed monthly

Fairways

We are waiting for a rainy day so that we can treat the fairways for leather jackets. As soon as it rains we will be spraying

Bunkers

These have been edged and will be done again when needed.

Rough

We are cutting the lush areas more often and at the moment doing a full cut every two weeks to keep the stalks down.

Boundaries

We have had a meeting with the husband and wife from the house on the 13th that complained about balls going into their garden. From what they were saying their biggest moan was the amount of sunlight in their bathroom in the daytime and that the undergrowth is so thick that they don't have a view down the fairway from the dining room. They were told that this was left to grow to reduce the risk of balls going into their garden.

They requested that we cut 6 foot of the top of all the trees along their boundary. They were told that nothing like that would happen because that would increase the amount of balls going into their garden.

I have had a meeting with Poole council about making the trees along the 13th a TPO and they are looking at it now. This would mean that any work carried out on the trees would have to go through planning. I asked would they give permission to top an oak tree under a TPO order and they said no.

This means that when our neighbours ask for us to top the trees, we will apply and the council will say no to the work and we can tell our neighbours that the council said no, taking the problem away from us.

I had already found out prices for 6 foot trees....

Scotts pines	£15
Laylandii	£15

To get trees that would be large enough to block balls would be very expensive and would require a tree spade to be used. I.E. £1000 per tree.

The large pine on 13th is going to be taken down on the 21st of august and a note has been put up in the club house to inform the members that the hole might be closed for the day.

When looking at where the net would go a birch tree was identified that would also have to come out and this will be an extra cost to the original quote of about £100.

Irrigation

The irrigation survey is going to take place on Wednesday the 21st august.

VANDALISM

Only one flag has been stolen this month.

I am getting CCTV sign made and these will be put up around the course to try and persuade the little darlings from messing about.

5 YEAR IMPROVEMENT PLAN

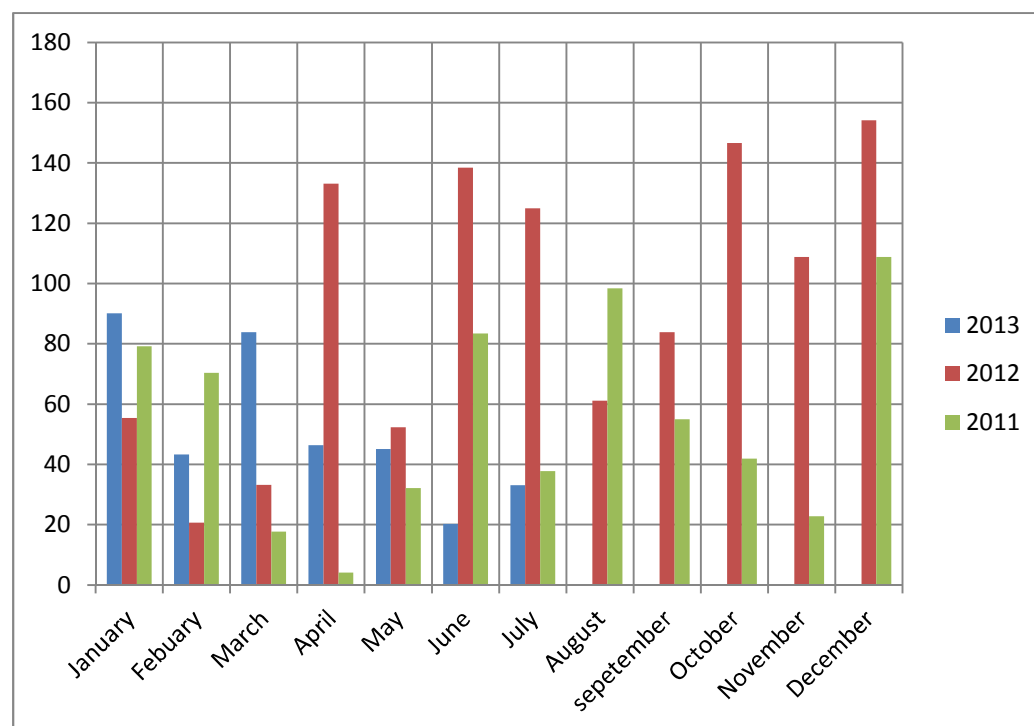
The quote for the design and construction has been sent in and because of the boundary issues these have been put on hold.

The improvements that are carried out in house have also been put on hold for this winter because of the boundary.

This means we will be carrying out more woodland work this year.

RAIN

See table below for how much rain we have had so far.



Total rain fall

2011 = 651.6mm

2012 = 1112.5mm

2013 = 362.1mm