

COURSE MANAGER REPORT

April 2013

COURSE WORK

Greens

There has been a lot of talk about the use of temporaries when there is a frost.

The reason is as follows.....

Last January, February, and March 2012 was classed as a drought. Then for the rest of the year it rained and rained, so much so that it was the second wettest year on record.

January, February, March and the start of April this year, have been very cold. The last time it was this cold in March was back in the 1960s.

A grass plant is lazy, for all of last year from April to now the sward has not had to go looking for water as it rained so much. This is why there wasn't the normal root development on the greens. Group this with the damage that is caused by golfers when playing on the greens in frost conditions (please see attached document or the course information board) the result would be a very poor putting surface for us going into the playing season. This is why I made the decision and put it to the directors that for the best interest for the club we would not allow play on the greens this winter in frost conditions. We will re-visit this decision at the end of the year to see if play on the greens when frozen is possible for next winter.

Please remember that everything that we the green staff do is for the benefit of you the members, even if you don't agree with the decision made at the time. We look at what is best for the club now and for the future. This is why we are using the temporaries at the moment in frost conditions.

Approaches

We are waiting for the soil temperature to increase before feeding. We need soil temperatures around 7/8 degrees Celsius for the fertilizer to work properly otherwise it would be a waste.

Tees

We are also waiting for the soil temperature to increase before feeding for the same reason as on the approaches.

Bunkers

As you will have seen the bunkers have been edged and I am currently getting sand samples sent in, as the sand we have been using is no longer available.

Irrigation

We have fired up the system and are repairing leaks and broken sprinklers.

Machines

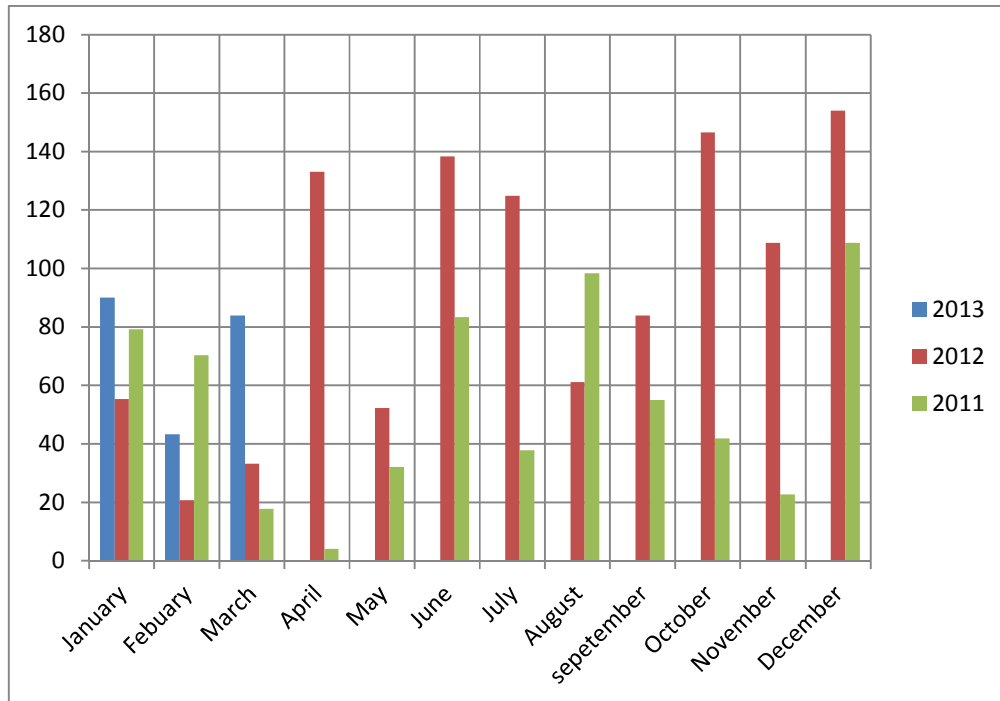
The John Deere tractor with the front bucket has a leak on the front axle and needs to be repaired this will put us over budget in 6020

GENERAL

Long term ground under repair (GUR) will be marked with blue posts.
This is to reduce cost, as to white line around these areas each week would be expensive.

RAIN

See table below for how much rain we have had so far.



Total rain fall

2011 = 651.6mm

2012 = 1112.5mm

2013 = 133.4 mm

PROJECTS

Bunkers

Complete and in play.

Approach

Complete and in play.

Path

8th, we have re-leveled this so that it can be left until we are able to complete.

Tee

4th Blue/Medal tee

The cold snap has slowed the progress of this tee, we are top dressing as much as possible to try and move the tee forward.

White/General play tee

We have turfed and installed the sprinklers, all we are waiting for is the turf to establish and at to help this we have started to top dress this tee. We need some warm consistent weather to help.

At the moment we are about 10 weeks behind on the 4th tee because of the weather conditions.

As soon as the tees are playable they will be opened.

We will however have to manage the amount of play when the tees are opened as we don't want to damage the turf.