

COURSE MANAGER REPORT

July 2013

COURSE WORK

Greens

There is some dry patch on a couple of greens due to the long period of hot, sunny weather we are in at the moment. We are targeting these areas by hand to keep the greens in good health.

Approaches

We have verti cut these to improve this surface.

Tees

These have been treated with Aquaduct which is a curative wetting agent. This will help with the dry patch.

Fairways

We are only cutting these as and when they need it due to the heat this is not often. We will however start to cut them with the rotary mower to reduce the stalks.

Bunkers

The new sand is bedding in well and we have finished adding sand for the year.

Rough

We are cutting the lush areas more often and at the moment doing a full cut every two weeks to keep the stalks down.

Practice area

A short term solution was agreed in the meeting we had on the practice area. It was to install 6 mats on the back of the tee to allow practice to take place all year the cost of the mats are £209 each if we order over 5 mats or £220 each. We would also have to buy wood for the frames plus other small expendables.

Boundaries

We have had complaints from a house on the 9th and 13th about balls going into the gardens. Poole council has got involved and we had a meeting last week. Other than shutting down the holes the only solution is to install a net to stop the balls. I have had a price in to have this done and it is £170 per meter. As we need about 100 meters this would add up to £17000. We need 40 meters at the 13th and 40 meters at the 9th.

The large pine on the 13th is dying and we have taken apart of it down but the rest is too big for us to do. I am getting a price for this. When this has been taken down the remaining 20 meters will go here to protect the house behind the tree while other trees grow in its place.

A woman is complaining on the 15th about branches and pine cones falling into her garden, I will get a price for tree climbers to go along this also.

Irrigation

Last year we didn't use the irrigation that much but over the last month it has been on nearly every night on tees and greens. Having used it this much has shown to me that we need a new irrigation system sooner than later. At my interview nearly two years ago I asked the question.

Have the club started to save for a new irrigation system?

The system we have is old and out dated. It is unreliable, inefficient and a poor design. We waste water every time we turn it on.

On most of the greens, 4 sprinklers are controlled by one valve in the control box. If every arc was the same and every sprinkler was also the same then this wouldn't be as much of an issue but as the arcs are all different and there are a lot of different makes and models of sprinklers on the course, we are wasting water every time it is turned on.

Example.....

Sprinkler 1 and 2 at the back of the green, 5 minutes to do 90degrees arc
Sprinkler 3 and 4 at the front of the green, 10 minutes to do 180degrees arc
All are controlled buy 1 controller.

If I need to do two passes with sprinkler 3 and 4 then at the same time sprinkler 1 and 2 will do 4 passes each, wasting water and giving an uneven water pattern.

The valves and pipe work in the boxes because of their age are starting to fail; we have several leaks around the course. To repair these we have to dig up the box and redo the entire pipe work in the box replacing all of the valves at the same time.

If we had a new system with valve in head we could control each individual sprinkler saving water and money by enabling us to target individual areas as needed.

A new system would also mean new pipe work, meaning fewer leaks saving water and money.

The clubs system has not died yet but if we wait until it does then we run the risk of losing the greens and tees if it happens in the summer.

It would be better if the club was proactive then reactive on this matter.

VANDALISM

The area down at the 4th, 5th, 8th and 9th has gone quite.

We have had a couple of things go missing over by the 14th and 16th greens but even this has begun to quite down.

School summer holidays start soon so I am expecting it to pick up again.

The fire on the heath was well away from us. The heath is 3 miles from side to side so for the news you are either at the Knighton heath end or at gravel hill end.

It was not 7 to 8 hectares that was burnt it was less than 1 hectare.

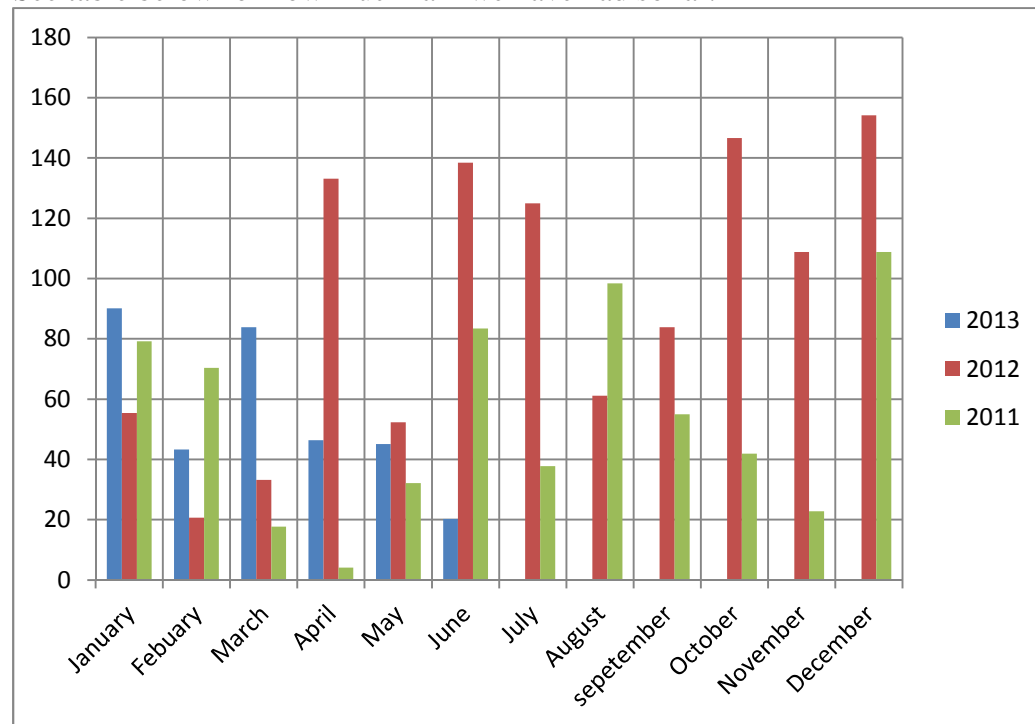
5 YEAR IMPROVEMENT PLAN

I have had a company in to give a rough estimate for the 5th green. When the price comes in I will let the directors know.

I have contacted a couple of architects to also find out prices and I am waiting for a response also.

RAIN

See table below for how much rain we have had so far.



Total rain fall

2011 = 651.6mm

2012 = 1112.5mm

2013 = 329mm