

Course Managers Report

May 2015

COURSE WORK

It's been a long hard spring this year. We have had frosts up until the 30th April. We even had a frost today (13th May) on the lower part of the course. Having frosts at night and warm days has had an adverse effect on the growth of the grass over the whole course.

Greens

Now the night temperatures have started to rise we have finally been able to reduce the height of cut to 3.5mm which is our normal summer height.

Other work carried out includes

- Sarel roll
- Verti cut
- Application of a soil surfactant and sea weed
- Application of a liquid fertiliser

To come

- aeration
- Over seed
- Top dress
- Application of a soil surfactant
- Application of fertiliser

Approaches

Cut as needed up to 3 times a week.

Work carried out

- Treatment of selective herbicide

To come

- Aeration
- Application of fertiliser

Tees

We are cutting at 14mm to try and keep more grass on the surface to see if it will reduce some of the wear.

Work carried out

- Application of a selective herbicide
- Divoted as often as possible

To come

- Aeration
- Application of fertiliser

Fairways

We are cutting twice a week in the diamond pattern. This looks better but takes 2 hours longer to do.

The report will come next month on the thatch levels and what we need to do but due to some information that I have requested not showing up yet the report is not finished

Bunkers

These are raked as often as staffing levels allow throughout the Monday to Friday. We cannot rake them daily as other work on the course is more important.

Long Rough

We have been cutting some areas when the conditions are right.

Trees

Tree work has all but stopped. We are only removing damage for weather conditions.

Information

Only when there is an issue will a date be added to the phone line. Twitter will be done daily.

Volunteer day

The volunteer day on the 5th May was cancelled as only 1 person turned up. Another one is booked in for the 9th June, if numbers are low we will cancel the rest over the summer and start them up again next winter.

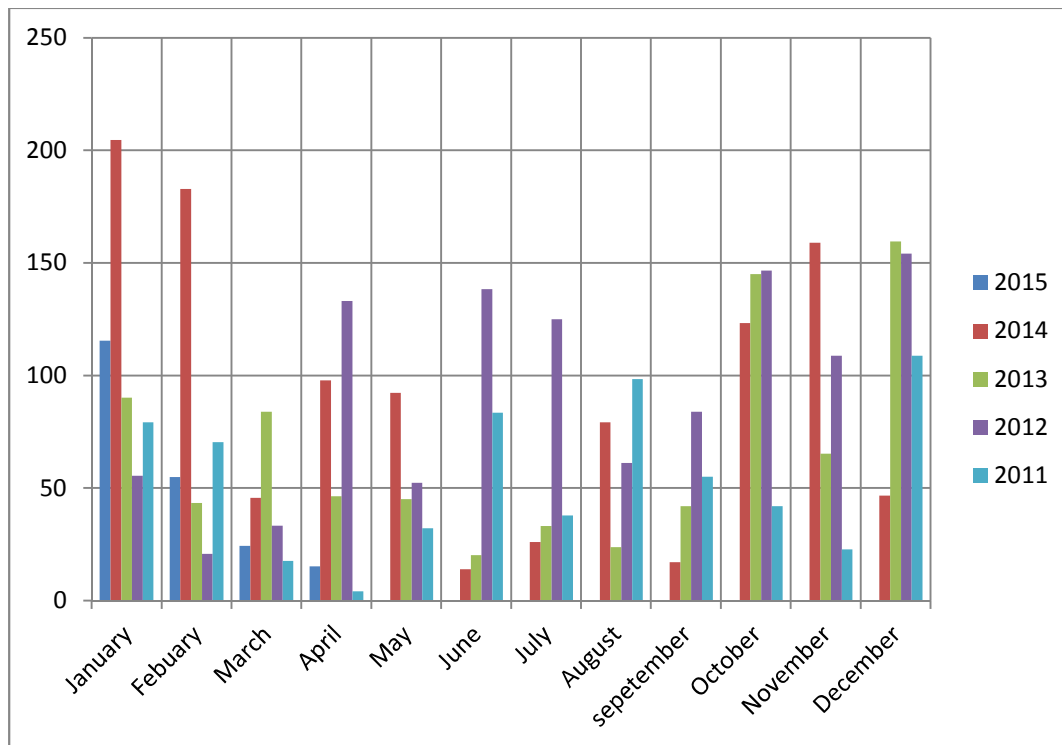
Course status

The table below shows the number of day the course has been open or closed and the number of days that trolleys and buggies were allowed for each month.

Month	Days closed	Days open	Trolleys allowed	Buggies allowed
January	0	31	25	23
February	1 (snow)	27	27	26
March	0	31	30	30
April	0	30	30	30

RAIN

See table below for how much rain we have had so far.



Total rain fall

2015 = 209.9mm

2014 = 1088.1mm

2013 = 797.7mm

2012 = 1112.5mm

2011 = 651.6mm

Last year was the third wettest on national record.