

COURSE MANAGER REPORT

October 2013

COURSE WORK

Greens

Course maintenance went well and we were finished in 3 days, due to the hard work of my team. The work carried out included, hollow coring, scarifying, over seeding, fertilising and top dressing. I would have liked to top dress again but the greens had an attack of fusarium patch. If we had dressed over this, the disease would have taken hold a lot more.

We will start the deep verti draining by the end of this month to relieve compaction and help with drainage at the same time.

The height that we cut the greens will be slowly raised over the next few months as we are entering winter.

Approaches

These have been verti drained and fed. This will help with drainage and thicken the sward.

Tees

The badger damage is slowing down. The tees have been verti drained and fed, also like the approaches. We have over seeded all the tees and we will start to top dress those that need it.

5th men's and ladies tees have been over seeded and top dressed heavily due to the poor grass coverage. The seed needs time to germinate without golfers playing on it. This is why the tee is now on the mat. The par 3 tees will also be dressed and seeded in the same manner and when the work is complete these will also be put onto the mats. Part of the problem with these tees is the irrigation system not being adequate to irrigate these areas properly.

Fairways

We are changing the direction of cut at the moment so you won't see the dark and light as normal. When the heavy aeration begins winter rules will be put in place. I will put signs up and let the relevant people know at this time.

Rough

We have taken the height of the rough down from 56mm to 50mm. This is because in winter the rough gets thicker so lowering it means it will become fair for the golfer to play and find their balls.

Boundaries

The planning has gone in for the safety fence along the 9th and 13th holes.

I am trying to get the council to extend the TPO on the 13th only. This is to protect the trees on our boundary.

I am not getting the TPO extended along the 15th. A TPO works by allowing the council a say in how the trees are managed. This however does not include dead or dangerous trees. These are still our responsibility and we would have to maintain the trees as normal. There is no point having a TPO on these trees.

Irrigation

We have had an independent irrigation specialist in to give a report on the irrigation system.

Please see the conclusion at the end of this report.

Temporary greens

It is better to have and not need than to need and not have.

We have cut out the temporary greens for the winter but with a bit of luck we won't need them.

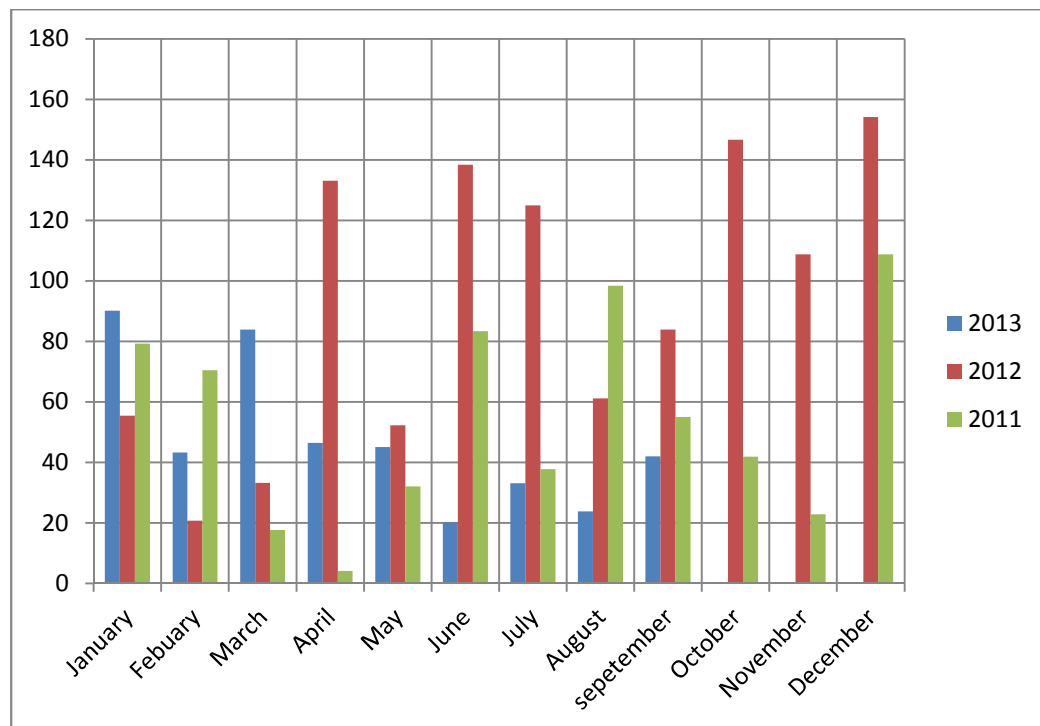
VANDALISUM

We have had a couple of normal events over the last month, a couple of flags stolen and rakes.

We have also had a break into the greenkeepers shed on the night of Sunday 29th September. They took 4 blowers, 3 strimmers and one pole saw. They beat a hole through the wall to gain entry. We are insured and these items have already been replaced. We are also having extra sensors installed to make it more secure.

RAIN

See table below for how much rain we have had so far.



Total rain fall

2011 = 651.6mm

2012 = 1112.5mm

2013 = 427.9mm

OTHER ITEMS

The men's and ladies captains (Mr. C Langston and Mrs. L Willetts) have very kindly provided the club with 6 inch hole cups for the temporary greens. This means there will no longer be a white ring on the temporaries due to the larger hole.

5TH AND 13TH HOLES

Normally in winter we use mats on these two holes, the greens chairman and I have discussed this, so for this winter we will try it without the mats. However if the damage becomes too much the mats will be put back into use.

FROST

Last winter we came off the greens in times of frost to protect the greens. This meant that the greens were in better condition earlier in playing season. This year as an experiment we will allow golf to be played on the greens in time of frost. However after long periods of frost it will still be necessary to come of the green as they defrost to protect the root system. In spring we will look at how the greens have coped with this and make a decision about winter 2014.