

# **COURSE MANAGER REPORT**

**June 2014**

## **COURSE WORK**

### **Greens**

We have verti drained the greens with 13mm pencil tines 5 inches deep. This was carried out due to the predicted wet June we are to have; normally we would have used smaller tines.

The height has been reduced to 3.5mm

We have verti cut and applied thatch away. This is a product that helps reduce the amount of thatch by feeding the good bacteria that eats thatch.

Work to come includes.

- Application of seaweed
- Application of wetting agent
- Application of fertilizer + growth regulator
- Application of moss control
- Aeration
- Top dressing

And all the normal day to day work that is carried out.

### **Approaches**

These have had

- Application of fertilizer + growth regulator
- Verti cut

To do

- Application of fertilizer + growth regulator
- Aeration

And all the normal maintenance

### **Tees**

These have had

- Application of fertilizer + growth regulator

To do

- Application of fertilizer + growth regulator
- Aeration

And all the normal maintenance

## **Fairways**

Work carried out includes

- Application of a selective weed killer
- Cut with the rotary mower to remove the stalks

To do

- Application of fertilizer with a growth regulator

As you will have noticed we are striping the fairways at the moment due to the amount of growth we have.

The 1<sup>st</sup>, 10<sup>th</sup> and 15<sup>th</sup> are progressing well. The seed has started to germinate.

We are still on preferred lies due to this.

An application of fertilizer has been made to all 3 fairways to help the new and existing grasses.

## **Temporary greens**

These have been removed.

## **Rough**

Work includes

- Application of a selective weed killer.
- Cutting daily as it has gone mad.

## **Trees**

The trees that were blown down in the last storm still need to be cut up, but as they are not in play they can left until we have time to cut them up.

## **Ditches**

We need to put a ditch along the 4<sup>th</sup> tree line on the left side from the flat area near to the old bunker. This is so that we will be able to drain the flat section of the fairway.

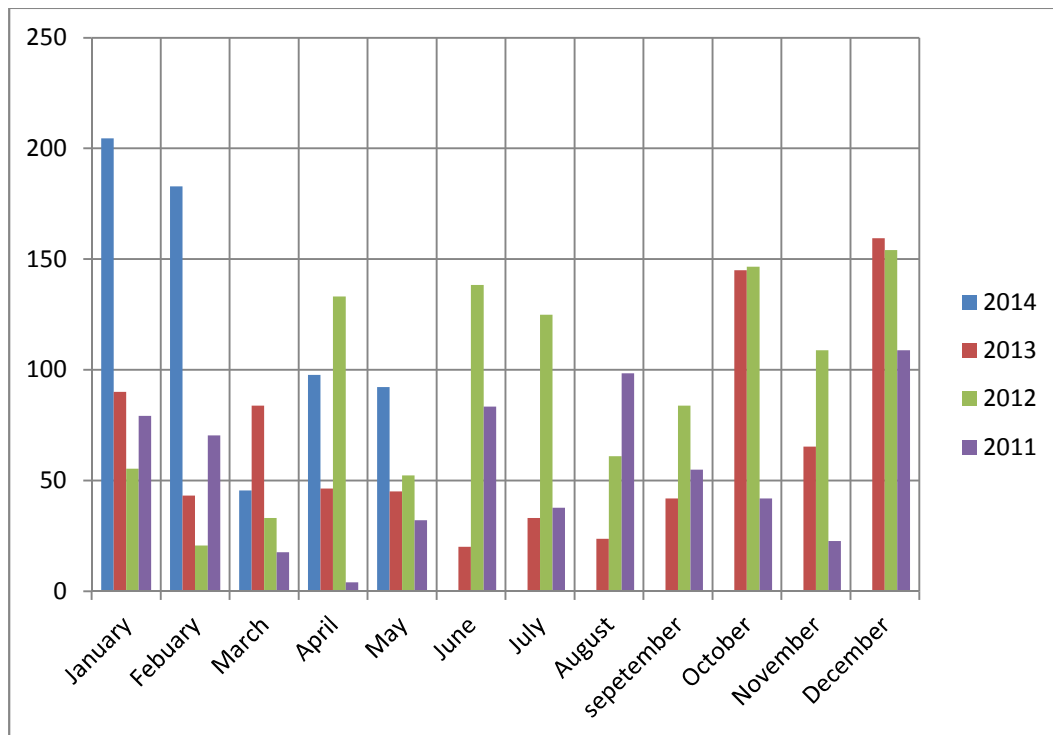
If we have time we will carry out this work soon as the left hand side of the rough is still water logged.

## **Irrigation**

We are replacing sprinklers and pipe work as needed.

# RAIN

See table below for how much rain we have had so far.



Total rain fall

2014 = 623mm

2013 = 797.7mm

2012 = 1112.5mm

2011 = 651.6mm